



GROWING GOOD, TOGETHER.
COMMUNITY FOUNDATION SERVING WESTERN VIRGINIA

ANNUAL REPORT 2024

YOUR COMMUNITY FOUNDATION TEAM



Alan E. Ronk
President/CEO



Carly C. Oliver
Chief Operating Officer



April M. Haynes
Regional Vice President,
Martinsville Regional Office



Michelle M. Eberly
Director, Grants &
Donor Engagement



Beth Kelley
Chief Financial Officer



Alyssa W. Rorrer
Program Associate
Martinsville Regional Office

REPORT OF ACTIVITIES FOR THE FISCAL YEAR ENDED JUNE 30, 2024

ROANOKE CORPORATE OFFICE

Mailing Address:
P.O. Box 1159 | Roanoke, VA 24006

Location:
611 S. Jefferson Street, Suite 8 | Second Floor
Roanoke, VA 24011
Phone: 540.985.0204

MARTINSVILLE REGIONAL OFFICE

Mailing Address:
P.O. Box 1124 | Martinsville, VA 24114

Location:
300 Franklin Street | Suite 230
Martinsville, VA 24112
Phone: 276.656.6223

GEOGRAPHIC SERVICE AREA

We are honored to work with individuals and families on their charitable estate plans throughout much of western and southwestern Virginia.

Community Foundation Serving Western Virginia is registered with The Virginia Office of Consumer Affairs, a member of Council on Foundations, and is a member of both Roanoke Regional Chamber of Commerce and Martinsville-Henry County Chamber of Commerce.



cfwesternva.org

A LETTER FROM THE PRESIDENT

GROWTH.

When recently posing the question to my trusty computer of “how to measure growth” of a company, the answer was that “growth rate is a percentage that measures how much a specific variable has changed over a period of time,” and then the formula was displayed for me. Accordingly, if we enter \$120,000,000 (current assets) and \$250 (assets at January 1990) into the formula, the growth rate is a staggeringly high number. While the percentage is mathematically correct, it actually reveals very little about the true success of your community foundation!

Retail icon James Cash Penney said that *“Growth is never by mere chance; it is the result of forces working together.”* Continual strong Board leadership is a force. Effective and dedicated professional staff is a force. A cadre of astute professional advisors is a force. And perhaps the strongest force of all is the collective group of caring, philanthropically-minded individuals and families who regularly seek to address our communities’ needs and respond to exciting future opportunities through their hard-earned assets. The resulting myriad stories of positive impact and significant change over time arising from all these combined forces — now, that is the true measure of our growth!

I invite you to read through our latest Annual Report to see many more of the details of our work. While you will see annual grants approaching \$4.2 million; assets that grew from \$110 million to \$120 million; and future planned gifts regularly increasing, I especially encourage you to consider and enjoy the donor and grantee profiles.

As always, we thank you for your interest and for being part of our Community Foundation family!

Warmest regards,



Alan Ronk

CONTENTS:

About Us	4	Renovation Alliance Profile	32
Who We Serve.....	4	Emil and Emma Lang Fund for the Visually Impaired	34
What We Do.....	5	Agency Endowment Funds.....	35
Mill Mountain Theatre Profile.....	6	Women in Philanthropy.....	36
Free Clinic of Franklin County Profile.....	8	Grants.....	37
MARC Workshop Profile	10	Public Support	
Virginia Breast Cancer Foundation Profile	12	Founding Donors.....	40
Community Foundation Leadership.....	14	The Society of Founders	40
Unrestricted Funds.....	16	Legacy Society Members	41
Field-of-Interest Funds.....	17	Friends of the Foundation	42
Scholarship Funds	19	Donors	43
Designated Funds	25	In Memory/Honor of	45
Donor Advised Funds	27	Financial Snapshot	47
Virginia Hunters Who Care Profile.....	30		

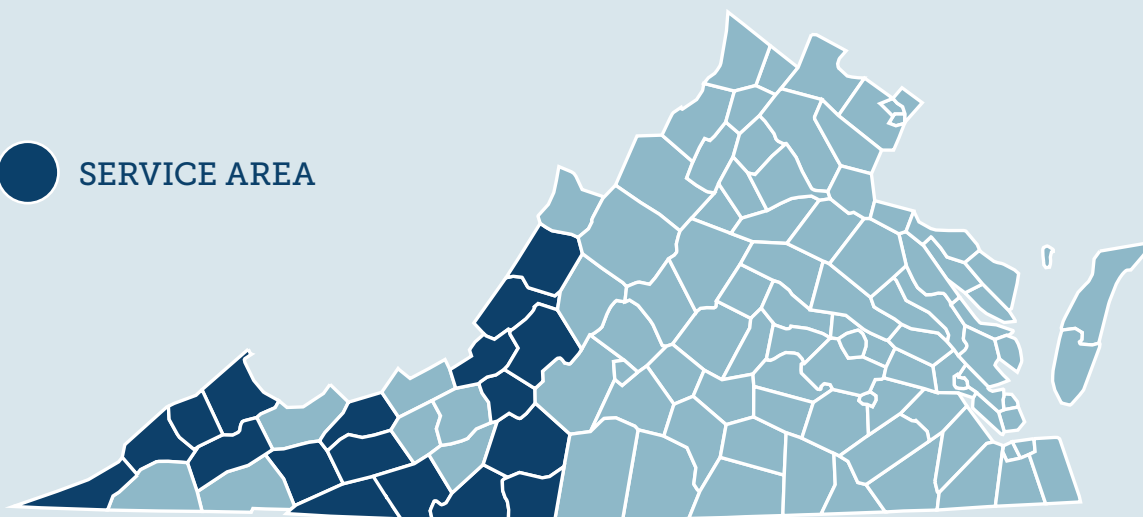
ABOUT US

CREATING LEGACIES. GROWING COMMUNITIES.

Community Foundation Serving Western Virginia has been providing customized services to donors for decades, connecting their generosity with a broad spectrum of important needs and opportunities within our communities. We exist to help people, with or without great wealth, give in ways that have joy and meaning for them. When you come to the Community Foundation with a dream, we offer a variety of flexible charitable solutions to make it come to life and go on forever.

Comprised of nearly 400 permanent endowment funds (and growing), the Community Foundation has awarded more than \$70 million in grants to community institutions since our beginning. Each of these grants helps make our nonprofits stronger, touches the lives of many people in very real ways and brings about transformative change that makes our region an even better place to live for all.

 SERVICE AREA



WHO WE SERVE

We are privileged to work with individuals, families, corporations, private foundations, nonprofits and others who reside in, or are located in, much of western and southwestern Virginia. Please see the map for additional specifics. With respect to grant making, we can award grants anywhere in the country as recommended by donor advisors.

WHAT WE DO

GIVING

Our mission is to enable people who love their community to easily give back. We always want to help folks feel good about their charitable giving. Whether their passion is arts and culture, the environment or helping students reach their educational goals, they have a professional partner and steward in the Community Foundation standing ready to help put that passion into action.

It is simple and easy to establish a fund with the Community Foundation, whether you want to create an endowment for a favorite nonprofit or provide unrestricted support to meet the needs of the community. A Fund is created with a minimum contribution of \$10,000 (\$50,000 for scholarships and \$25,000 for agency endowments). There is no cost to set up a Fund. Thereafter a Fund is assessed an annual administrative fee ranging from 1% to 1.75%. Donors may elect to start a fund with contributions of cash, publicly traded or closely held securities, real estate, personal property or by the use of planned giving vehicles such as charitable remainder trusts, charitable lead trusts, life insurance policies and bequests. Contributions of any size are also welcome to existing Funds at any time.

GRANTMAKING

The Community Foundation works tirelessly to carry out the wishes of donors and to provide expertise in local philanthropy. We constantly stay attuned to the latest developments in the nonprofit community. If donors want information on an organization, we will promptly do research and share the results of that due diligence. We also monitor the results of grants, all with the goal of ensuring that they are effective, efficient and productive.

In addition to monetary grants, the Community Foundation provides many hours of technical expertise and strategic leadership to nonprofit organizations.

TYPES OF FUNDS

Community Foundation Serving Western Virginia is comprised of many different funds dedicated to purposes our donors define. Here are the primary options:

UNRESTRICTED FUNDS provide the greatest flexibility, allowing the Community Foundation to respond to the community's pressing needs through changing time and circumstances.

FIELD-OF-INTEREST FUNDS allow donors to pinpoint support to broad areas of concern, such as education, the arts, the environment, youth services or geographic areas they choose.

DESIGNATED FUNDS ensure regular, endowed support is provided to specific charitable organizations in the donors names.

DONOR-ADVISED FUNDS allow donors to make recommendations about the distribution of grants.

SCHOLARSHIP FUNDS help further the education of students who are selected by volunteer committees based on criteria donors outline, whether a student is from a particular geographic area, attending a certain school or planning a career in a specific field.

MEMORIAL FUNDS ensure a special person is remembered through a Fund that reflects his or her legacy.

AGENCY ENDOWMENT FUNDS are created by nonprofits as a means of building charitable dollars for the future of their mission and work.

We can be remarkably flexible in crafting a charitable solution for you. Setting up a Fund is simple and can be done in a matter of minutes. For more information visit cfwesternva.org.



MILL MOUNTAIN THEATRE

The incredible funding that Mill Mountain Theatre received to improve and enhance the safety of our Trinkle Main Stage will allow our patrons to enjoy the theatre safely for many years to come. The new handrails, alternating colors on the carpet stairs and improved aisle lighting makes MMT shine brighter!

Ginger Poole
Producing Artistic Director
Mill Mountain Theatre



Mill Mountain Theatre (MMT) aims to inspire, entertain, enrich, educate, and challenge audiences in Southwest Virginia through professional theatrical productions. It focuses on nurturing future theatre artists and audiences through conservatory classes, education, and community engagement programs. Committed to the sustainability of performing arts in the Roanoke Valley, MMT has become a leading regional theatre, producing more than 400 shows, from world premieres to classics, in its Center in the Square facilities. Recent highlights include *To Kill a Mockingbird* and *Elf the Musical*.

MMT presents professional productions, including musicals, dramas, and new plays, serving a broad audience. Its season typically features four fully staged musicals or dramas (10–18 performances each), two musical revues (three performances each), and a Fringe Series with six

topical plays. MMT collaborates with Hollins University's Theatre Institute for new play co-productions. In a previous year, MMT reached 19,103 patrons and students, with 71% attending events in the Trinkle Main Stage auditorium. Additionally, the venue hosted programs by other organizations renting the space for performances and meetings, contributing to downtown Roanoke's economic growth and revitalization.

MMT received \$10,000 from the Community Catalyst Funds for safety upgrades to the Trinkle Main Stage Auditorium, crucial for preserving this historic landmark in Roanoke's urban core.



Founded in
1964

Celebrating
60 years!



More
than

25,000
patrons used the
new Trinkle Safety
features in 2024

200+
volunteers
per year





FREE CLINIC OF FRANKLIN COUNTY



The Free Clinic of Franklin County, Inc. is a nonprofit organization committed to providing quality, affordable primary healthcare to all, regardless of socioeconomic or insurance status. Its mission is to enhance community health through exceptional primary care, disease prevention, and wellness promotion, focusing on long-term well-being for local residents.

The Clinic offers a wide range of services, including primary care, women's wellness care, health education, specialist referrals, free or low-cost prescription medications, in-home medical equipment and supplies, and lab testing for those in

poverty with limited access to health insurance. It also assists low-income senior Medicare patients without Part B or Part D coverage, serving Franklin County and surrounding areas. Patients must be adults with incomes below 300% of federal poverty guidelines.

The Clinic recently received \$16,340 from the Thomas P. and Lewis S. Parsley Fund to support operational costs for its pharmacy and employ a full-time pharmacy technician. This funding allows the Clinic to provide necessary prescription medications, helping patients manage acute health issues like infections and maintain control of chronic conditions such as diabetes and hypertension.

This service not only improves the quality of life for low-income and elderly patients but also reduces community healthcare costs by preventing emergency room visits for manageable conditions.

Additionally, the Clinic received \$50,000 from the Polly and Bill Armistead Fund and Fishwick Fund to cover the costs of the lead Nurse Practitioner. With volunteer doctors only available a few hours per month, this position is essential in meeting the Clinic's patient care demands. As a result of these services, patients experience consistent medical care, enabling them to work and support their families more effectively.

The Community Foundation has been a lifeline to our organization, allowing us to achieve our mission of providing high quality healthcare and medicine to uninsured residents of Franklin County.

Emily Waller, DMSC, PA
President, Board of Directors
Free Clinic of Franklin County



500

individuals were treated at the Free Clinic last year

The Free Clinic has operated a licensed pharmacy for nearly
30 years



12%
of the Franklin County population is uninsured

The Free Clinic is the only medical practice serving the uninsured in Franklin County





MARC WORKSHOP

The Community Foundation's generous support of MARC's Founders Scholarship Fund provided an opportunity for individuals without the resources to access our day program to assist them with development of skills sets necessary to successfully integrate into their community.

Melody Justice
Executive Director

Since 1969, MARC Workshop in Martinsville, VA, has operated on the belief that everyone has inherent value and deserves the support needed to reach their full potential. The organization's mission is to provide services that help individuals with disabilities develop essential skills, enabling them to lead more fulfilling lives within their communities. MARC Workshop's day support program, launched in August 2016, focuses on enhancing social interaction, communication, and independent living skills. Conveniently located along public transportation routes, the program ensures accessibility for participants.

In 2022, MARC Workshop established a Scholarship Fund to assist individuals who need services but lack financial resources. While many participants receive Medicaid Waivers or support from Piedmont Community Services Board, these funding sources are limited, making it difficult for some to access the services necessary for personal growth and improved quality of life.

A \$7,000 grant from the Martinsville Area Endowment Fund and the Romero Family Fund will help sustain the Scholarship Fund, allowing MARC Workshop to offer its day support services to those who cannot afford them. Scholarship recipients will work with the organization to create personalized service plans that address their unique needs and focus on areas for further skill development, fostering greater independence and success.



16

participants enrolled
in the day
support program

The day support
program is centrally
located in
Martinsville, VA



Services are provided
to individuals over
the age of
18 years

Participants can
attend the day support
program up to

5 days/wk





VIRGINIA BREAST CANCER FOUNDATION



The Virginia Breast Cancer Foundation (VBCF) empowers Virginians impacted by breast cancer through advocacy, education, and community action. VBCF provides essential education about breast cancer, coordinates a screening and diagnostic fund to cover the costs of testing for those who may be diagnosed, and advocates at the hospital, state, and federal levels for policies that benefit breast cancer patients and their families. VBCF serves everyone in Virginia, recognizing that breast cancer touches all lives, either directly or indirectly.

The VBCF received \$20,000 from The Cancer Center Fund to support the Diagnostic Testing Fund for the City of Martinsville and Henry and Patrick Counties.

This grant also funded marketing efforts to raise awareness of the program and provided for transportation assistance, including transportation reimbursement.

The Diagnostic Testing Fund covers essential diagnostic

tests, including mammograms, ultrasounds, biopsies, MRIs, and other necessary scans for diagnosing breast cancer. Patients participating in this program can also receive mileage reimbursement or have rides arranged by Carilion through a medical transportation service, ensuring they can access the care they need.

Additionally, part of the funding was allocated to support the Act PINK program, which helps faith communities educate their congregations about breast cancer. The grant covered the costs of mailing materials for Act PINK and marketing the diagnostic and transportation funds, as well as the Act PINK program itself.



We are so grateful to the Community Foundation for their grant from The Cancer Center Fund. Following through with testing after an abnormal breast cancer screening can be life-saving, but it can also be expensive. With the help of the Community Foundation, we are able to help more women from the City of Martinsville and the Counties of Henry and Patrick go through diagnostic testing for breast cancer with no out-of-pocket cost, meaning they could get peace-of-mind or begin their treatment faster.

Erin Steigleder
Director of Programs

Founded in
1991



Partnered with
6 providers
across the state with
our diagnostic fund

830+

women received help
to pay for diagnostic
testing since 2022



VBCF offers **FREE**
educational packets
for people diagnosed
with breast cancer and
their caregivers

FOUNDATION LEADERSHIP

The Foundation's Board of Governors is comprised of dedicated volunteer leaders who are selected for their knowledge of, and active participation in, the life of the community. The full Board meets quarterly, and the Executive Committee meets as needed.



CHAIR
Susan Lancaster
Community Volunteer



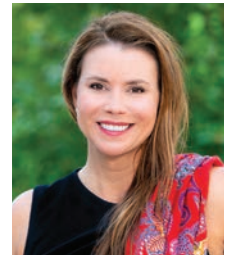
VICE CHAIR
Lutheria H. Smith
Chief Operating Officer
Elevatus Consulting LLC



TREASURER
Julianne Naff
Senior Vice President
TCV Trust and Wealth
Management



Richard Bailey, D.V.M.
Botetourt Veterinary
Hospital



Gretchen W. Beedle
Financial Advisor
The Conner Group



John Blanton
Vice President
Associate General
Counsel
Advance Auto Parts



Dr. J. Randolph Clements
Podiatrist
Carilion Clinic
Orthopedics



Susan E. Cook Esq.
Woods Rogers PLC



Elaine Milan Cronk
Community Volunteer



Sherry Davidson
Former Regional Director,
Medical Device Industry



Margie Beazley Eason, MD
Psychiatrist (retired)



Lauren Ellerman
Frith, Ellerman & Davis
Law Firm, P.C.



James B. Frith Jr.
Chairman
Frith Construction
Company



Frederick "Rick" James
President
Adams Construction Co.



George Levicki
President
Strategic Management
Services



Colleen M. Marston
Realtor
Long and Foster
Real Estate



Samuel Roman Jr.
Roanoke Assistant
City Manager



Nadra L. Scott
VP, Director of Sales
Mel Wheeler, Inc.



Verletta B. White
Superintendent
Roanoke City Public
Schools



Florence V. Williams
Sustainability Coach
Continuous Improvement
Allstate Personal Property
— Liability

REGIONAL ADVISORY BOARD

The Foundation's Regional Advisory Board is comprised of dedicated volunteer leaders who are selected for their knowledge of, and active participation in, the life of the Greater Martinsville community. The Advisory Board meets quarterly.



CHAIR
Margie Beazley Eason, MD
Psychiatrist (retired)



VICE CHAIR
Tracy E. Tate
VP of Operations
Vrain Corporation



Deepak D. Banerjee, MD
Cardiologist
Stateline Heart and Vascular



James B. Frith Jr.
Chairman
Frith Construction
Company



Mike Grogan
President, Southeastern
Wood Products



Lynanne L. Newman
Senior Vice President
Diversified Trust
Company



O. Randolph Rollins
Attorney
O. Randolph Rollins, PLC

GOVERNORS AND ADVISORY BOARD EMERITI

Nancy Howell Agee
Robert A. Archer
Mary K. Bickford*
Rita D. Bishop, EdD
R. Steve Blanks
Abney S. Boxley, III
Robert L. Bradshaw Jr.
Frank G. Carter
J. Smith Chaney Jr.
Dorothy S. Clifton
Nan L. Coleman
Sallye T. Coleman*
Mimi Rainero Coles
Sally Fishburn Crockett*

Walter M. Dixon Jr.*
Nancy V. Dye, MD
Lucy R. Ellett
William D. Elliot
Edwin R. Feinour
Tammy M. Finley
Joy D. Frantz
Jan B. Garrett
Maryellen F. Goodlatte
Mason Haynesworth
James N. Hinson
Franklin Dewitt House
Talfourd H. Kemper
Robert C. Lawson Jr.

James B. Lee
Barbara B. Lemon*
Stephen W. Lemon
Eugene C. Madonia
James W. McAden
Olin R. Melchionna Jr.
Julien H. Meyer Jr. MD*
Barton W. Morris Jr.*
Stephen A. Musselwhite
William A. Nash
Deborah Oehschlaeger
Kathryn Krisch Oelschlager
J. Lee E. Osborne
Peter A. Ostaseski

William L. Pannill
John C. Parrott II
Douglas E. Pierce, MD
Bittle W. Porterfield III*
Charlotte K. Porterfield
Randall R. Rhea, MD
Harry S. Rhodes
Frank W. Rogers III
Eliza H. Severt
Cynthia M. Shelor
Elizabeth R. Sibbick
Cleo Sims
Donald G. Smith*
Gwen Hermes Smith

James G. Snead, MD*
Kimberly Kiser Snyder
Susan K. Still
Philip Trompeter
Kenneth D. Tuck, MD
Michael E. Warner*
Courtney A. Wenkstern
Leonard Wheeler
A. Damon Williams
John B. Williamson III

PAST GOVERNORS AND ADVISORY BOARD MEMBERS

Steve Arner
Page B. Beeler
Joseph W. Beury
N.L. Bishop
Robert E. Bryant
John P. Budd, Jr.
Carter L. Burgess*
Melinda T. Chitwood
Beverly L. Coleman
Sigmund E. Davidson*

William R. Davis*
Russell H. Ellis
Norman D. Fintel*
Carolyn Alley Fleming
Robert P. Fralin
John R. Francis Jr.*
Clydenne R. Glenn*
David R. Goode
Lucian Y. Grove*
W. William Gust

Virginia Walker Hamlet
Leigh B. Hanes Jr.*
James W. Harkness
James W. Haskins
Jerry Higginbotham*
James H. Johnson Jr.*
Jesse E. Kent*
Heidi F. Krisch
Cynthia D. Lawrence
Angelica Lloyd Light

Robert P. Martin
Colin C. Murchison
Jess Newbern III
Shawn N. Pace
W.D. Prince III M.D.*
Frank W. Rogers Jr.*
D. Thomas Royster Jr.
Alexander I. Saunders
Brian W. Smith
Garnett E. Smith

Kathryn A. Smith*
Glenn O. Thornhill Jr.
Paul B. Toms Jr.
William D. Vickers*
Jim L. Wade
Bill F. Williams
Jack F. Wright Jr.*

UNRESTRICTED FUNDS



Anonymous Fund

Dorothy S. Anderson Memorial Fund

Established through the estate of Dorothy S. Anderson.

William H. Bason Jr. Unrestricted Fund

Established by Chett Bason.

Faith S. Bickford Fund

Established by the late Sam Bickford.

Bonsack/Shaver Charitable Fund

Established through the estate of Betty Bonsack Shaver.

Edith P. and Frank W. Bova Fund

Established by Edith and the late Frank Bova.

John W. and Sadie M. R. Boyle Fund

Established by the late Sadie M. R. Boyle.

James Elmer and Margot Lange Brown Fund

Established through the estate of Margot Lange Brown.

John D. and Frances Huff Carr Memorial Fund

Established through the estate of Frances Huff Carr.

Community Enrichment Fund

Established by a member of the Board of Governors.

J. W. "Bill" and Alice G. Davis Fund

Established by the late Bill Davis.

J. B. and Grace Fishburn Memorial Fund

Established by the late Louise F. Kegley.

Al and Olivia Graham Fund

Established by the late Olivia G. Graham.

Kossen Gregory, Jr. Memorial Fund*

Established by the late Kossen and Sarah Gregory in honor of their son Kossen Gregory, Jr.

Robert S. and Mary M. Hutcheson Fund

Established through the estate of Mary M. Hutcheson.

Gene A. Hylton Memorial Fund

Established through the estate of Gene A. Hylton.

Donald M. Kinzer Fund

Established through the estate of Donald M. Kinzer.

Mary Anne and Robert A. Kulp Fund

Established by the late Mary Anne Kulp.

The Sarah Snyder Laughon Charitable Fund

Established through the estate of Sarah Snyder Laughon.

Doris and Weldon Lawrence Family Fund

Established by the late Doris and Weldon Lawrence.

Lawrence Transportation Systems, Inc. Fund

Established by the Lawrence family.

Babe and Sidney Louis Fund

Established through the estate of Sidney Louis.

Martinsville Area Unrestricted Fund

Established by the citizens of the Martinsville community.

The Lynn and Julien Meyer Fund

Established by the late Julien and Lynn Meyer.

Jim and Anne Taylor Nimmo Fund

Established by the late Walter M. Dixon, Jr.

Phyllis and Jim Olin Fund

Established by the late Phyllis and Jim Olin.

John and Sarah Belle Parrott Fund

Established by John and Sarah Belle Parrott.

The Patsel Fund

Established by the late Martin "Jake" Patsel, Jr.

The Pruner Fund

Established by the late Carol W. and Robert A. Pruner.

The Richard and Jean Rakes Foundation Fund

Established through the transfer of The Richard and Jean Rakes Foundation.

Trina B. Ramzinsky Fund

Established through the estate of Trina B. Ramzinsky.

Richard and Alva Scammon Fund

Established by the late Alva R. Scammon.

Edward R. and Barbara Scruggs Memorial Fund

Established by the late Edward B. and Barbara R. Scruggs.

Kathryn Ascough Smith Memorial Fund

Established by Nelson Franklin Smith.

Ivey C. Stone Fund

Established by the late Ivey C. Stone.

Robert H. and Doris G. Teter Fund

Established through charitable gift annuities by Robert and Doris Teter.

The Vinyard-Wood Fund

Established by the late Claiborne Vinyard.

Janet C. Whitaker Fund

Established through the estate of Janet C. Whitaker.

Women in Philanthropy Fund

Established by numerous members of the Women in Philanthropy initiative.

FIELD-OF-INTEREST FUNDS



Mary Josephine Haynes Allen Fund for Continuing Education

Established by the late Mary Josephine H. Allen Charitable Trust, this fund supports individuals recovering from substance abuse with a preference for programs that help women pursue educational opportunities.

Polly and Bill Armistead Fund

Established by the late Polly and Bill Armistead, this fund benefits the needs of the medically indigent.

Henry and Ethel Bazak Children's Book Fund

Established by Benjamin and Suzanne Bazak, this fund provides age-appropriate books to economically-disadvantaged children up through the age of two.

C. Mead Boxley Memorial Fund

Established by the Boxley Family, this fund addresses the needs of young children under the age of six (75%) and also focuses on the research and treatment of spinal-cord injuries (25%).

Raymond and Mary Brodie Memorial Fund for the Education of Children

Established through the estate of Mary Brodie, this fund provides educational opportunities for children under age 18.

Helen Cadd Elderly Protection Fund

Established by the grandchildren of Helen Cadd, this fund enables elderly citizens to feel more secure and safe in their residence.

Marion S. and Willie Z. Camp Fund for Eldercare

Established by the late Willie Z. Camp, this fund addresses the needs of the elderly in the Roanoke Valley.

Cancer Center Fund

Provides and promotes health services and educational, diagnostic and treatment resources to victims of cancer and related conditions in the Martinsville community.

Jerry Smith Chaney Memorial Fund

Provides assistance to needy cancer patients who are residents of the Martinsville community.

Monte Cohen Fund

Established through the transfer of the Monte Cohen Fund from Goodwill Industries of the Valleys, Inc., this fund, initially established by

the late Sigmund and Harriet Davidson, provides assistance to persons with disabilities.

Anne E. Craghead Charitable Fund for the Needy

Established through the estate of Anne Elizabeth Craghead, this fund supports a local church and organizations that serve the needy.

The Dobyons Fund

Established by Robyn N. Dobyons, this fund helps veterans' recovery by using Music and/or Pet Therapy, and other therapeutic services for veterans.

Janet Lynn Donnary Family Fund

Established by Janet Lynn Donnary in memory of her parents, Lillian and Harold Mackney, this fund supports organizations that provide services to underprivileged and underserved children in the communities served by the Foundation.

Terrance D. Donnary, Jr. Memorial Fund

Established by Janet Lynn Donnary in memory of her husband, this fund supports organizations that serve military veterans in the communities served by the Foundation.

The Earl D. and Carrie Leigh Doran Fund

Established through the estate of Earl D. Doran, this fund supports nonprofit agencies that were of interest to Earl, helps agencies that serve individuals and families confronting catastrophic, life-altering circumstances, and supports agencies that provide shelter, care and assistance to battered women.

Donna Few Memorial Fund

Established by Stacy Few Peters and Jaime Few Whitlow, this fund supports math programs in the middle and high schools within the Henry County Public School system.

Fishwick Fund

Established through the estate of Palmer Fishwick Posvar, this fund supports the elderly and needy individuals in the Roanoke Valley.

Lynn Woody Fitzgibbons Fund

Established by Thomas P. Fitzgibbons and family and friends, this fund supports educational opportunities within the Henry County Public School system, with an emphasis on student academic and career growth, with preference

given to projects and programs at the Center for Community Learning.

Dr. John D. French Legacy Fund

Established by Linda M. French, this fund supports organizations serving children and families.

Lloyd and Peggy Gochenour Endowment Fund

Established from the Peggy and Lloyd Gochenour Charitable Remainder Annuity Trust, this fund supports needy individuals residing in Roanoke County, Roanoke City, City of Salem, Botetourt County and Craig County.

The Bettie Nichols Guthrie Social Service Fund

Established by the late Audrey Guthrie, this fund provides emergency or temporary relief to needy persons in the Greater Roanoke Metropolitan Area.

Charles F. Hall, III Fund

Established in memory of his mother-in-law, Thelma K. Olson, by the late Charles F. Hall, III, this fund provides grants to social service organizations to help people in need who are genuinely striving towards self-sufficiency.

The Help, Inc. Fund

Established by W. Stebbins Hubbard, Jr., this fund supports substance abuse prevention and treatment programs in the Roanoke Valley.

Hermes Family Fund

Provides and promotes breast health services and encourages development of diagnostic and treatment options for residents of the Martinsville community and supports other charitable activities and projects that improve the quality of life in the Martinsville community.

Mary Louise Home Fund

Established with assets from the Mary Louise Home of the King's Daughters, this fund supports and cares for elderly indigent residents of the Roanoke Valley.

HomeTown Bank Community Fund

Established by the former HomeTown Bank, this fund supports financial education initiatives in the community, programs that promote homeownership for low to moderate income families, and programs that provide educational and career services from low to moderate income families.

Charles and Pat Houghton Fund

Established by Dr. Charles W. and Pat H. Houghton, this fund supports organizations that improve the lives of needy elderly citizens of the community.

The Hope Fund

Established by anonymous donors, this fund's primary purpose is to support organizations that serve individuals and families in need of food, shelter or medical assistance, as well as battered women and children; also to support organizations that serve our Wounded Warriors that have been injured as a direct result of a military deployment, along with other non-profit organizations of interest to the donors.

Hospice Fund

Provides assistance and services to any needy resident of the Martinsville community with end-of-life medical needs and expenses.

Rita Knox Hutts Memorial Fund

Established through the estate of Rita Knox Hutts, this fund supports organizations that teach people how to be self-reliant and self-sufficient, help the needy obtain prescription medications, address the basic human needs of children, and provide financial assistance to Catholic seminarians.

Melva P. Jones Fund for Music and Art

Established through the estate of Melva P. Jones, this fund supports music and arts programs, preferred for the Town of Vinton.

Phalia M. and Guy M. Kinder Fund

Established through the estate of Phalia Miles Kinder and Guy Millard Kinder, this fund supports agencies and organizations which are effective and efficient in preventing cruelty to animals; research and medical advancement for the cure of the diseases in animals; professional education of animal caretakers; and programs which promote the positive relationship between humans and animals.

Emil and Emma Lang Fund for the Visually Impaired

Established by the late Emil and Emma Lang, this fund provides support to programs and agencies that address the needs of the visually impaired in Roanoke City, City of Salem, Botetourt County, Craig County, and Roanoke County.

The Camille M. Lownds Charitable Fund

Established through the estate of Camille Lownds, this fund supports the needs of children with cancer or cancer research.

Martinsville Area Endowment Fund

Provides health services to needy residents of the Martinsville community, supports health-related teaching, educational and research programs and generally provides for the medical care of the Martinsville community.

Medical Education Fund

Supports continuing medical education for students in the Martinsville community and healthcare professionals who practice in the Martinsville community.

Sandra Lee Overstreet Fund

Established by the late Sandra Lee Overstreet, this fund supports organizations providing dental, medical or surgical services to children or adults in the Roanoke Valley who cannot afford them and organizations in the Roanoke Valley which provide, rescue, care and adoption services for lost, sick or neglected animals.

Thomas P. and Lewis S. Parsley Fund

Established by the late Lewis Parsley, this fund places a premium on the preservation of dignity, hope and personal independence for the elderly and needy. The fund addresses three specific community concerns: to help the elderly and needy afford prescription medications; to fight substance abuse; and to help elderly and needy obtain home health services when they cannot manage alone.

Marion K. Ramsey Fund

Established by Dr. and Mrs. Douglas E. Pierce, the fund supports elderly citizens in the community.

Ravenel Oncology Center Fund

Established by Dr. Nigel Goodchild, this fund provides a broad range of support and care to needy patients who have been treated at the Ravenel Oncology Center.

Roanoke Valley Academy of Medicine Fund

Established by the Roanoke Valley Academy of Medicine, this fund supports the broad medical needs in the community.

Roanoke Valley Children's Fund

Established by the B. Wilson Porterfield, Jr. Foundation, this fund addresses the broad needs

of children in the Valley from prenatal care until their sixth birthday.

Romero Family Fund

Established by Betty LaPrade Romero, this fund provides medical assistance to the elderly and disabled population in Henry and Franklin Counties and the City of Martinsville.

Ann and Bill Scheer Fund

Established by the late Ann and Bill Scheer, this fund provides broad support for the elderly citizens of the Roanoke Valley.

Dr. Charles L. Shedd Endowment Fund

Established by the Shedd School Foundation, this fund honors and commemorates the life of Charles Livingston Shedd, Ph.D. and supports educational needs.

Jacqueline S. (Jackie) and Shelborn L. (S.L.) Spangler Fund

Established by the late Shelborn L. Spangler, this fund supports a wide variety of important community needs and opportunities in the communities of Poages Mill, Bent Mountain, Copper Hill and Check, Virginia.

Robert Harrison Smith Memorial Fund

Established by N. Frank Smith, this fund supports organizations that assist handicapped or disabled persons.

Dr. Robert Manton Wilson Memorial Fund to Eradicate Leprosy

Established by the late Samuel B. McGhee, this fund supports worldwide efforts to eradicate the scourge of leprosy.

Larry Woodrow Vest Fund

Established through the estate of Larry Woodrow Vest, this fund supports a wide range of community needs with particular consideration being given to charitable organizations providing services to Floyd County, Virginia residents.

Pamela M. Wright Fund

Established by Joseph B. Wright, this fund supports local and national organizations devoted to the welfare of animals.

Byron and Nancy Yost Fund

Established by Byron L. and Nancy T. Yost, this fund supports efforts to alleviate childhood hunger.



SCHOLARSHIP FUNDS

The Alphin Family Scholarship Fund

Established by the late Samuel B. McGhee and nieces and nephews in memory of Elizabeth Alphin Brown and Louise Alphin McGhee, this fund provides undergraduate higher education scholarships to deserving Rockbridge County High School graduates.

Homer O. Amos Memorial Scholarship Fund

Established through an estate gift to Roanoke City Public Schools, this scholarship provides education assistance to needy, deserving students from Roanoke City Public High Schools.

Jim Barker Scholarship Fund

Established by the Boys & Girls Club of Southwest Virginia, this fund provides college scholarships to deserving students within the Boys & Girls Club of SWVA service area who were a member of Boys & Girls Club of SWVA for at least two years.

Linda Sowder Barnhart Memorial Scholarship Fund

Established by the family of Linda Sowder Barnhart and through other memorial gifts from the community, this fund provides higher educational scholarship assistance to deserving students who attended Sontag Elementary School in Franklin County, VA.

Bassett Kiwanis Club Scholarship Fund

Established by the Bassett Kiwanis Scholarship Education Foundation, this fund provides college scholarships to graduating seniors or past graduates of Bassett High School in Bassett, Virginia.

N. R. Burroughs Educational Fund

Provides scholarships to further the education of deserving and qualified men and women who live within a 200 mile radius of the Henry County Circuit Court.

Cave Spring Lions Club Scholarship Fund

Established by the late Lion Frank W. Martin, this fund provides college scholarships to Roanoke Valley high school seniors, with an emphasis on volunteerism and leadership.

CITY School Foundation Scholarship Fund

Established through Roanoke City Public Schools with royalties from Empty Chairs, this fund will perpetuate the legacy of CITY School by providing educational scholarship assistance to young men and women attending Patrick Henry High School and William Fleming High School.

William D. and Sallye T. Coleman Memorial Scholarship Fund*

Established by the late William and Sallye Coleman, this fund provides financial scholarships to deserving young men and women who attend a public high school in Roanoke City and are members of High Street Baptist Church.

Kelsey Nicole Cooper Scholarship Fund

Established in memory of Kelsey Nicole Cooper, this fund awards scholarships to deserving students in Henry County or Martinsville.

Scholarship Fund for Craig County High School Students

This fund provides college scholarships to Craig County High School graduates.

Christi Crutchfield Memorial Scholarship Fund

Established by Roanoke Valley Wine Company, this fund provides educational scholarship assistance to young men and women attending Northside High School or Lord Botetourt High School.

Berkeley and Zelma Cundiff Scholarship Fund

Established by Sheila D. Barnhart, this fund provides scholarship support to needy, deserving students from Franklin County High School.

Helen F. Dickson Scholarship Fund

Established through the estate of Helen F. Dickson, this fund provides higher education scholarship assistance to Alleghany High School students.

Roxie Stultz Dillard and Marion A. Dillard Scholarship Fund

Established by transfer of an estate trust, this fund provides educational scholarships for worthy young African American women and men going to a reputable college or university or graduate school.

Emiliano received an Ethel Snidow Holland Memorial Scholarship. He is a current Junior at the Georgia Institute of Technology studying Engineering.



As a student who chose to go out-of-state for their education, I recognized this path offered the most opportunities for academic and personal growth. However, I also knew it meant sacrificing the more affordable in-state tuition. The Community Foundation Scholarship has helped me fund my next year of school and has also opened up prospects of potentially studying abroad in Summer 2025. I am extremely grateful to have been selected for this award and feel especially supported as it comes from a scholarship near home.

– Emiliano Gonzalez

Dillon Family Scholarship Fund

Established by James M. Dillon, this fund provides higher education scholarship assistance to graduating seniors.

Lenna E. Etzler Scholarship Fund

Established through the estate of Lenna E. Etzler, this fund provides higher education scholarship assistance to Lord Botetourt High School students.

Joycelyn "Fudgie" Lee Farrelly Music Education Scholarship Fund

Established by former students and friends of Fudgie Farrelly, this fund provides scholarship assistance to students who intend to pursue a degree in music or music education.

Davis B. and Barbara J. Francis Scholarship Fund

Established by Davis B. and Barbara J. Francis, this fund provides scholarship assistance to Roanoke Valley high school students pursuing a degree and/or career in technical theatre or performing arts, including television or other types of media productions.

Carolyn and Bill Franck Scholarship Fund

Established by Martha Franck Rollins, and family and friends, this fund provides scholarships to young men and women pursuing post high school education in technical, vocational, academic or professional fields.

Franklin County Ed-U-K8or Scholarship Fund

Established by Walter K. and Kimberley A. Young, this fund provides educational scholarship assistance to needy, deserving students attending Franklin County Public Schools.

Gilbert-Thompson Memorial Award Fund

Established by Dr. and Mrs. James I. Gilbert, III and Mr. and Mrs. Arthur L. Thompson, this fund provides higher education scholarship assistance to Alleghany County High School students.

Joseph Waskey Gilbert Memorial Fund Award

Established by the Falling Springs Presbyterian Church, Covington, Virginia, this fund provides higher education scholarships to students involved with the church.

Clarence M. Gillis Memorial Scholarship Fund

Established by Thelma Haynesworth and family members in memory of Clarence M. Gillis, this fund provides higher education scholarship assistance to Roanoke City high school students.

Nancy and Bud Goehring Scholarship Fund

Established by the late Nancy and Bud Goehring, this fund provides scholarship assistance to Franklin County High School students who are pursuing an Associates Degree through a Virginia community college or advanced studies at an accredited career or technical school, college or university.

Beverly W. and Mabel Tudor Grogan Scholarship Fund

Established by the Beverly W. Grogan and Mabel Tudor Grogan Educational Fund, this fund provides educational scholarship assistance to students who are graduates of Patrick County High School.

Michael Dean Guillems Memorial Scholarship Fund

Established by Penny Guillems and her family and friends, this fund provides scholarship assistance to students who are pursuing studies to enhance their career in a vocational or technical field.

The Bettie Nichols Guthrie Scholarship Fund

Established by the late Audrey Guthrie, this fund provides educational opportunities that support and encourage students in the pursuit of careers that enhance the quality of life for themselves and their communities.

Joel C. Hall and Elizabeth L. Hall Educational Fund

Established by Joel and Elizabeth Hall, this fund provides higher education scholarships with preference to students studying to become a Methodist minister and from the City of Martinsville, and the counties of Henry, Patrick, Franklin and Pittsylvania.

Jim and Pam Harris Scholarship Fund*

Established by Jim and Pam Harris, this fund provides scholarships to deserving young men and women who attended William Byrd High School and plan to study engineering.

Mimi Hart Memorial Police Scholarship Fund

Established by an anonymous donor, this fund provides educational scholarship assistance to students who are the children or grandchildren of employees of the Martinsville City Police Department.

Susan Kilgore Hill Memorial Scholarship Fund*

Established by Frank Hill Jr., this Fund provides scholarships to needy and deserving students graduating from Scott High School in Madison, WV.

Ethel Snidow Holland Memorial Scholarship Fund

Established through the estate of Ethel S. Holland, this fund provides scholarships to high school graduates who wish to continue their education in college or vocational school.

Hooker Educational Scholarship Fund

Established by Hooker Furniture Corporation and the Hooker Educational Foundation, this fund provides higher education scholarships to deserving high school seniors and undergraduate students in Henry County or the City of Martinsville, Virginia and to students who are children or spouses of Hooker Furniture Corporation (HFC) employees.

Margaret Jones Irvin Scholarship Fund

Established by the late Reid Jones, Jr., this fund provides college scholarships to students pursuing an undergraduate, graduate or doctoral degree.

Jefferson College of Health Sciences Scholarship Fund

Established by Jefferson College of Health Sciences Education Foundation, this fund provides educational scholarship assistance to deserving young men and women who intend to pursue a career in the health sciences at Radford University Carilion in Roanoke, VA.

Melva P. Jones Scholarship Fund

Established through the estate of Melva P. Jones, this fund provides educational scholarship assistance to young men and women attending William Byrd High School who desire to further their education after secondary school.

LaPrade Educational Fund

Provides educational scholarships to further the education of young men and women who appear to be able, deserving and in real need of financial assistance with preference given to students from the City of Martinsville, Henry County, Franklin County and Pittsylvania County.

Clarence Lee Lester Educational Fund

Established by First Baptist Church of Martinsville, this fund provides financial scholarships to deserving students who are members of or have a family member at First Baptist Church of Martinsville.

Lester Educational Fund

Provides educational scholarships to help students obtain an education in a profession or vocation, with preference given to students from Martinsville, Henry County and Franklin County, Virginia.

Victor A. and Louise R. Lester Educational Fund

Established by the Victor A. and Louise R. Lester Trust, this fund provides educational scholarship assistance to deserving students, with preference given to students from Martinsville and Henry County who plan to attend a Baptist or other church-related college in Virginia.

Grace Lovegrove Memorial Scholarship Fund

Established by Patrick Henry High School and many donors, this fund provides higher educational scholarship assistance to graduating high school seniors attending Patrick Henry High School.

Marion Senior High School Memorial Scholarship Fund for Music, Art, the Performing Arts, and Education

Established by several donors in memory of deceased members of the Class of 1970 and for all classes of the school who wish to memorialize classmates and loved ones.

SCHOLARSHIP SNAPSHOT

\$775,130 TOTAL AWARDED

ROANOKE VALLEY

105 Recipients
\$280,580 Awarded

MARTINSVILLE AREA

130 Recipients
\$494,550 Awarded

298 Total Scholarships Awarded

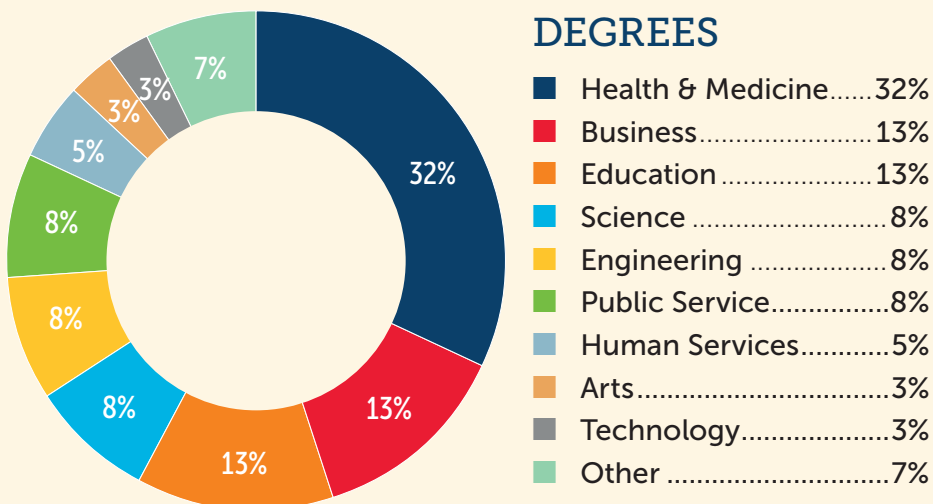
235 Total Scholarship Recipients



Jennifer received a Victor A. and Louise R. Lester Educational Fund scholarship. She is a current sophomore student at Ferrum College on a pre-med track.

For me this scholarship is not just financial support, but a validation of my hard work and dedication to my education. It's empowered me to continue to pursue my academic goals. I am committed to using my scholarship to achieve and continue my aspirations of becoming a physical therapist. I am incredibly grateful for Community Foundation Serving Western Virginia and their help to students in my community!

– Jennifer Ruiz



WHERE THEY ARE HEADED



VIRGINIA COLLEGES

PUBLIC UNIVERSITY
69%



OUT-OF-STATE

PRIVATE COLLEGE
24%

COMMUNITY COLLEGE
7%

TOP ATTENDED SCHOOLS

39 VIRGINIA TECH
28 UNIVERSITY OF VIRGINIA
23 RADFORD UNIVERSITY
10 JAMES MADISON UNIVERSITY

SCHOLARSHIP RECIPIENTS



Katelin Agnew
Amira Alderman
Hajir Ali
Sarah Anderson
Maggie Arnold
Wendy Ayers
Saara Basuchoudhary
Abbygale Bender
Taylor Berenbaum
Ian Betton
Evelyn Bolling
Yajuwamunga Bora
Emily Bray
Finley Brightwell
Tucker Brookman
Savannah Brown
Madison Brown
Delaney Burris
Genesis Cabrera-Madrigal
Katherine Cecil
Hailey Chitwood
Joshua Cockram
Kennedy Coleman
Sydney Compton
Lauren Cone
Caroline Cook
Kendall Cope
Julianna Cox
Aaliyah Craig
Case Crawford
Alyson Cuthbertson
Laurence Dada
Taylor Davis
Nishan De Leon
Paulo DeSouza-Carey
Sophie Dewire
Cristiano Di Maro
Piper Doughton
Jacqueline Drago
Angela Drapac
Tori Easter
James Farris

Elizabeth Ferguson
Madison Ferguson
Rachel Fincher
Sarah Finley
Haven Foley
Andrew Fowler
Armonie Fox
Analuisa Frias-Alvarez
Anna Frittmann
Rongxing Fu
Lydia Galbreath
Alexis Garten
Skylar Gay
Emiliano Gonzalez
Hunter Greer
Isaac Gwin
Sydney Haddox
Cierra Hagwood
Tyrian Hairston
Naomi Hairston
Brittanie Hairston
Lara Hall
Rya Hall
Maia Hall
Ella Harig
Scott Harmon
Rhyann Harris
Liam Heaslip
Allison Hess
Lauren Holland
Nathan Hopkins
Alicia Hubbard
Kirsten Hylton
Pacific Ibanzi
Rachel Inman
Kylie Jackson
Caleb Jenkins
Abigail Jimenez-Ramirez
Julia Johansson
Asha Johnson
Sara Jones
Mallory Kaczor

Elyssa Kancherla
Erin Keith
Sophie Kendall
Kaycee Kincaid
Zoe Kinkema
Kaden Knight
Hung Lam
Eric Lane
Lauren Largen
John Laughridge
Elise LeGault
Kelcie Lemons
Candice Lockard
Lauren Luther
Caleb Lynch
Whitley Manns
Naomi Manns
Taylor Martin
Anesia Martin
Zy'Adria Martin
Parker Martin
Ian Martin
Landon Martin
Catherine Maxwell
Emilie McCaskill
Zoie Mills
Kailei Minter
Maggie Minton
Brittney Mitchell
Hannah Mitchell
Eyad Mohamed
Madison Moock
Lawrence Moore
Amber Morgan
Nathan Morrison
Abigail Mosley
Hunter Muddiman
Olivia Newbill
Lacey Newton
Lacey Ngo
Deaquan Nichols
Austin Nielsen

Paula Painter
Zachary Palumbo
Evan Parnell
Justin Patrick
Claudia Phillips
Anna Poe
Justin Pool
Nala Preston
Bear Priddy
Clara Prillaman
Morgan Rago
Alyssa Ramsey
Kelsey Reece
Leah Reece
Taylor Reed
Zeariah Reeves
Brandon Reid
Leia Richardson
Skyler Robertson
Saylor Robertson
Sophia Rosado
Madison Ross
Dayton Royster
Jennifer Ruiz
Heidi Ruiz-Lopez
Audrey Russell
Grayson Russell
Kenna Sarver
Kayleigh Saunders
Martin Sawyers
McCray Sawyers
Zariah Scales
Megan Scott
Leslie Silva
Lisa Smith
Charlotte Smith
Raven Smith
Emily Snow
Nathan Snow
Faith Sprinkle
Audrey Stamper
Clayton Stanford

Cooper Stanford
Kristie Strader
Gracyn Strickler
Krischal Sutar
Briana Tatum
Chloe Taylor
Myah Taylor
Mallorie Teer
Ann Marie Thorell
Leah Tillman
Kathryn Toney
Quynh Tran
Walker Tull
Tyler Turner
Jack Turner
Dua Umar
James Underwood
Grace van Gerven
Adam Cade Varner
Kendall Varner
Alyssa Veasey
Garrett Via
Michael Walker
Gabriella Wall
Samantha Wall
Brittany Waller
Bailey Warden
Lori Watson
Emily White
Heather Whitlow
Haley Whitlow
Cadence Wilkerson
Kennedy Wilkins
Alayna Williams
Sydney Witcher
Austin Witcher
Emma Wooldridge
Lindsay Wrenn
Maygen Wright
Emily Yeatts
Faith Young

Martinsville Kiwanis Club — J. Lawson Dyer Key Club Scholarship Fund

Established by the Martinsville Kiwanis Club, this fund provides educational scholarships to Martinsville High School seniors.

Edwin K. Mattern, Jr. Memorial Scholarship Fund

Established by Deborah N. Mattern and Summers Mattern Henderson, this fund provides college scholarships to Roanoke Valley high school seniors.

Ronald L. Mayfield, Jr. Scholarship Fund

Established by friends and colleagues of Ron Mayfield, this fund provides college scholarships to Patrick Henry High School or William Fleming High School seniors enrolled in the English Language Learners Program.

The Louise and Sam McGhee Scholarship Fund

Established by the late Samuel B. McGhee and nieces and nephews, this fund provides undergraduate higher education scholarships to deserving James River High School graduates.

Carol Lee McGuire-Bishop Scholarship Fund

Established by Norris C. Bishop Jr., this fund provides college scholarships to graduating seniors at Alleghany High School who are pursuing a degree at Virginia Polytechnic Institute and State University.

Member One Federal Credit Union — Henry Lee Memorial Scholarship Fund

Established by Member One Federal Credit Union, this fund provides higher education scholarships to graduating seniors who are members of Member One Federal Credit Union and attending a Virginia college or university.

Member One Federal Credit Union — Richard L. "Dick" Williams Memorial Scholarship Fund

Established by Member One Federal Credit Union, this fund provides higher education scholarships to graduating seniors who participate in varsity sports and are members of Member One Federal Credit Union and attending a Virginia College or university.

Dorothy and Julien Meyer, Sr., M.D. Scholarship Fund

Established by the late Julien H. Meyer, Sr., this fund provides higher education scholarships to Roanoke Valley high school graduating seniors to pursue premedical studies.

MFP Scholarship Fund

Established by anonymous donors, this fund provides educational scholarship assistance to students pursuing an undergraduate degree or certificate in health, business or religion at a Virginia college, university or technical school.

Clarissa Edwards Noland Memorial Scholarship Fund

Established in memory of Clarissa Edwards

Noland, this fund provides scholarships to deserving students intending to pursue a career in teaching or creative writing.

The National Honor Society — Felton Pendleton Memorial Scholarship Fund

Established by Edmund Pendleton, this fund provides undergraduate higher education scholarships to deserving George Wythe High School graduates.

Walter M. Otey, III Scholarship Fund

Established by Walter M. Otey, III, this fund provides undergraduate educational scholarship assistance to deserving students pursuing degrees from Virginia Polytechnic Institute and State University's College of Agriculture and Life Sciences, Roanoke College, and Virginia Western Community College's Nursing Program.

Sam and Tristan Pilson Memorial Scholarship Fund

Established by Shawn Pilson McCraw and Renee Prillaman, this fund provides educational scholarship assistance to graduates of Bassett High School in Bassett, Virginia.

Ashby C. and John T. Pinkard Scholarship Fund

Established by Ashby and John Pinkard, this fund provides financial scholarships to deserving young men and women who are residents of Henry County, Virginia.

Jean L. Price Scholarship Fund

Established by the late Jean L. Price, this scholarship fund provides financial scholarships to underprivileged students living in the Roanoke Valley.

Dr. Robert A. Pruner Memorial Scholarship Fund

Established by the late Carol Pruner, this fund provides college scholarships to Patrick Henry High School graduates.

Rangeley Educational Fund

Provides educational scholarships for students pursuing study in technical, vocational, academic or professional fields, with preference given to students from Martinsville and Henry County.

Phillip Charles "Flip" Reid Scholarship Fund

Established by the late Charles Preston Reid, this fund provides scholarships to Alleghany High School baseball players.

The E. Price Ripley Memorial Foundation Fund

Established through the transfer of the E. Price Ripley Memorial Foundation to the Community Foundation, this fund provides higher education scholarships to Roanoke Valley high school graduates.

Frank W. (Bo) Rogers Scholarship Fund

Established by the family of the late Frank W. Rogers, Jr. and Woods Rogers, PLC, this fund provides scholarship support to Roanoke Valley students, with an emphasis on volunteerism.

David Roller Memorial Scholarship Fund

Established by David Roller's family and friends, this fund provides college scholarships to at least one student each from Patrick Henry High School and William Fleming High School who plan to study art at the college level.

Romero Family Fund

Established by Betty LaPrade Romero, this fund provides scholarship assistance to students in technical, vocational, academic or professional education fields, with preference given to students from Henry and Franklin Counties and the City of Martinsville.

Frances Parker Rupert Memorial Scholarship Fund for Music and the Performing Arts

Established by the late Burdette A. Rupert, Sr. and B.A. Rupert, Jr., this fund provides music and art scholarships for student artists in the Alleghany Highlands region.

Michael David Scott Memorial Scholarship Fund in Honor of the James River High School Class of 2000

Established by Michael's father, Billy; mother, Holly; brother, Kyle and family and friends, this fund provides higher education scholarships to James River High School seniors, with preference given to students with learning disabilities.

Frank D. "Bo" Shrader Memorial Scholarship Fund

Established by the late Sarah W. Davis and family and friends, this fund provides scholarship assistance to Bath County High School seniors to pursue vocational arts studies.

Eddie Simpson Scholarship Fund

Established by the late W.B. Overstreet, this fund honors and memorializes Captain Eddie Simpson by helping worthy students attain their higher education goals through scholarship support.

Joyce and Shad Solomon Family Scholarship Fund

Established through the estate of Joyce H. Solomon, this fund provides higher education scholarships to Bath County High School students.

Denise L. Sprinkle Memorial Scholarship Fund

Established by the family of Denise L. Sprinkle, this fund provides educational scholarship assistance to needy and deserving students from Lord Botetourt High School and James River High School.

Benny Summerlin Scholarship Fund

Established by friends and family, this fund provides educational scholarship assistance to students pursuing a career in public service and/or public safety.

Samuel "Bo" Terry Scholarship Fund

Established by an anonymous donor, this fund honors and memorializes Samuel "Bo" Terry's life and commitment to the community through

educational scholarships for deserving young men and women.

Bryan William Thomas Scholarship Fund

Established by Jean and Jay Thomas, family and friends, this fund provides college scholarships to Glenvar High School senior athletes.

John and Sue Trimble Family Scholarship Fund

Established by the late John and Sue Trimble, this fund provides scholarship support to Bath County High School seniors.

Troutville Volunteer Fire Department Scholarship Fund

Established by the Troutville Volunteer Fire Department, this fund provides higher education scholarships to high school seniors living in Botetourt County who plan to pursue a career as a First Responder or other related fields.

Kenneth D. Twitchell Memorial Scholarship Fund

Established through the estate of Kenneth Twitchell, this fund provides scholarships to students who are the children of employees of Branch Builds.

H.B. and E.B. Wharton Scholarship Fund

Established through the estate of E. B. Wharton,



Tyrese Perkins, one of this year's Hooker Educational Fund Scholarship recipients, dances the night away with donor Martha Rollins. Beginning his college pursuits at Virginia Commonwealth University this fall, Tyrese will pursue a degree in Business with plans for a future career in real estate.



Diol Glele, recipient of the Grace Lovegrove Memorial Scholarship, proudly accepts his certificate from James Hill, representing Patrick Henry High School. Diol will begin Virginia Tech this fall with plans to pursue Computer Science Engineering, Applied Mathematics and Physics.

this fund provides higher education scholarships to Roanoke City or Roanoke County students, preferably of the Christian Scientist faith and preferably to attend Virginia Polytechnic Institute & State University.

Dianne E. H. Wilcox Scholarship Fund

Established by the late Reid Jones, Jr., this fund provides college scholarships to students pursuing an undergraduate, graduate or doctoral degree.

The John W. Wilks, M.D. Excellence in Science Memorial Scholarship Fund

Established by the family of the late John W. Wilks, M.D., this fund provides educational scholarship assistance to support needy and deserving students with the intention of pursuing a career in the medical field.

Melva Dulaney Wright Memorial Scholarship Fund

Established by Ernie Wright in memory of his mother, the fund provides financial assistance to a graduating senior from Cave Spring High School or graduating senior who is either an employee or child of an employee of Integrated Textile Solutions.



Brothers Jeremiah and Nikolai Morgiewicz celebrate their accomplishments with their parents as each was recognized for receiving The Homer O. Amos Memorial Scholarship and the H.B. and E.B. Wharton Scholarship. The twins both plan to pursue a degree in Engineering from Virginia Tech.



Anna Locklear, recipient of the Joycelyn 'Fudgie' Lee Farrelly Music Education Scholarship, receives her award from Victoria and Eric Thornton, the daughter and son-in-law of the scholarship's namesake. Anna will attend Belmont University in Nashville, Tennessee, majoring in Music Education, with aspirations to teach music in schools, offer private vocal coaching, and perform professionally.



Hannah received a scholarship from the Rangeley Educational Fund. She is a current graduate student studying Pre-med at Lincoln Memorial University.

This is not just a scholarship, this is a significant contribution toward the making of a future Physician Associate and without this generous award I would not have been able to make it thus far within my educational career. I will forever be grateful for the Community Foundation and all that it has done for me through the years.

– Hannah Mitchell



Helen F. Dickson Scholarship recipient, Sadie Moye, makes her way forward to receive her certificate at the Scholarship Awards Dinner in May.

DESIGNATED FUNDS



Administrative Endowment Fund

Supported by numerous donors, this fund helps support the daily administrative needs of the Foundation.

Gail H. Albert Charitable Fund

Established by the late Gail H. Albert, this fund supports St. Jude Children's Research Hospital, Shriners Children's Hospital, and Wounded Warrior Project.

James R. Alvis Jr. Children's Hospice Fund

Established by the late Roger Hodnett, Dr. William Baker, the late Al Tignor, family and friends, this fund supports Good Samaritan Hospice.

Anonymous Fund

Established by an anonymous donor, this fund supports Grace Network of MHC.

The Anne Armistead Fund

Established by the late Anne Armistead, this fund focuses on selected social service and cultural organizations.

Dorothy Back and Nathaniel Back Charitable Fund

Established by the late Nathaniel and Dorothy Back, this fund is designated to support a local agency.

Carroll E. and Vella H. Bowyer Charitable Gift Annuity

Established by Carroll and Vella Bowyer, this fund will support The Rescue Mission of Roanoke, Inc.

Margaret I. Camplejohn Charitable Gift Annuity

Established by Margaret I. Camplejohn, this fund will support The Rescue Mission of Roanoke, Inc.

David "Crockett" Chatham Memorial Fund

Established by the late Mrs. Hugh H. Chatham and family members, this fund provides assistance and services to needy residents of the Martinsville community with end-of-life medical needs and expenses.

Earl L. and Ethel Y. Childers Fund

Established through the estate of Earl L. Childers,

this fund supports nonprofit organizations of interest to the donor and his family.

Elizabeth Teague Coglitore Memorial Fund

Established by Robert Dean Teague and Julia Teague Van Nutt, this fund supports Christa McAuliffe Elementary School.

Nancy Drew Charitable Gift Annuity

Established by Nancy Drew, this fund will support the Warm Hearth Foundation.

Francis and Helen Ewald Family Charitable Fund

Established by the Ewald family, this fund supports selected arts and cultural organizations and other charitable interests of the family.

Reba K. and Sidney Falkenstein Fund

Established by the late Joan F. Brenner and David S. Falkenstein, this fund supports Temple Emanuel.

Howard Feiertag Charitable Gift Annuity

Established by Howard Feiertag, this fund supports the Warm Hearth Foundation Fund.

Fund for Educating Ministers and Missionaries

Established by the late Samuel B. McGhee, this fund provides higher education scholarship assistance to students at Union Theological Seminary and Presbyterian School of Christian Education to pursue a career as an ordained minister or as a missionary.

Fund for Garth Newel Music Center

Established by Edward A. and Susan R. O'Neal, this fund benefits Garth Newel Music Center.

Anthony Giesen Endowment Fund*

Established through the estate of Anthony Geisen, this fund supports Ferrum College and St. John's Episcopal Church in Roanoke, VA.

Greene Memorial United Methodist Church Fund*

Established by a church member, this fund supports Greene Memorial United Methodist Church.

The Zelda and Julius Halpern Fund

Established through the estates of Zelda and Julius Halpern, this fund supports six nonprofit organizations.

The Samuel Charles and Neva Carol Baker Hill Charitable Fund

Established through the estate of Samuel C. Hill, this fund benefits Bradley Free Clinic and The Salvation Army.

Rita Knox Hutts Memorial Fund

Established through the estate of Rita Knox Hutts, this fund supports many of her favorite charities and organizations helping those in need.

Gene A. Hylton Administrative Endowment Fund

Established through the estate of Gene A. Hylton, this fund supports the Foundation's work in the community.

John A. Jamison Fund

Established by the Jamison family and by Blue Ridge Community Services, this fund helps selected clients of Blue Ridge Behavioral Healthcare pursue educational opportunities.

Sara W. Johnston Charitable Remainder Annuity Trusts

Established by Sara W. Johnston, these funds will support organizations of interest to Sara.

V. Diane Kelly Fund for Forgotten Victims

Established by Elizabeth (Ibby) Greer, this fund supports the Super Hero Kids Program of Total Action for Progress.

Bill and Irene Kennedy Fund

Established by the late Bill and Irene Kennedy, this fund supports nonprofit organizations of interest to the donors and their family.

Sandy Mac Campership Fund

Established in honor of W. Alexander McEachern, this fund provides camp experiences for youth at UUC youth camps.

The Conrad and Clara Avril Maier Fund

Established by the late Mary C. Maier, this fund benefits the scholarship program of Hollins University and may also benefit The Nature Conservancy, Christendom College, and a hospice in the Roanoke Valley.

Dr. Norman G. and Doris M. Marriott Charitable Gift Annuities

Established by Norman and Doris Marriott, these funds will support The Rescue Mission of Roanoke, Inc. and Warm Hearth Foundation.

Connie Stephens May Scholarship Fund

Established by Teresa M. Stowasser, this fund honors and memorializes her mother's long interest in education by helping worthy students who are resuming or beginning their higher education after a lapse of years to attain their higher education goals.

Iris and Ed McCallum Fund

Established by the late Edward L. McCallum, this fund supports HopeTree Family Services.

Al and Betsy McClearn Fund*

Established by Betsy McClearn in memory of her husband, this fund supports the Burton Center for Arts and Technology.

Debra C. Meade Fund for United Way of Roanoke Valley

Established by Debra C. Meade, this fund supports United Way of Roanoke Valley.

Dorothy and Julien Meyer, Sr., Fund

Established by the late Julien H. Meyer, Sr., this fund supports capital improvements for Temple Emanuel, Roanoke, Virginia.

Julien H. Meyer, Sr. Fund

Established by the late Julien H. Meyer, Sr., this fund supports the Roanoke Symphony Orchestra.

Barton and Margaret Morris Administrative Endowment Fund

Established by the late Margaret and Barton Morris and supported by numerous donors, this fund helps support the daily administrative needs of

the Foundation and provides an annual challenge to the Foundation's Board of Governors.

The Dorothy S. and Walter Muir Memorial Fund

Established through the estate of Walter Muir, this fund supports the Roanoke Valley Chess Club, the Fintel Library at Roanoke College and the Western Virginia Foundation for the Arts and Sciences.

Betty Grubb and C.E. Norris Fund

Established by the late Betty Grubb Norris, this fund supports Pikeville High School, Pikeville, KY for the school's C.E. Norris Scholarship and Girl Scouts of Virginia Skyline Council, Roanoke, VA for The Betty Grubb Norris Scholarship Fund.

Sandra Lee Overstreet Fund

Established by the late Sandra Lee Overstreet, this fund supports The National D-Day Memorial Foundation and Virginia Museum of Transportation.

Howard Picard Charitable Gift Annuity

Established by Howard Picard, this fund supports the Warm Hearth Foundation.

Louis and Agnes Popp Fund

Established through the estate of Louis F. Popp, this fund benefits seven charitable organizations.

Carol W. Pruner Fund for the Environment

Established through the estate of Carol W. Pruner, this fund supports her longstanding charitable interests in preserving the environment and conserving land for greenspaces.

George A. and Pauline Pruner Endowment Fund

Established by Pruner Family members, this fund supports Lebanon Memorial United Methodist Church of Lebanon, Virginia.

Pultz-Young Memorial Endowment Fund

Established by the late James M. Young and Barbara P. Young to honor their parents, this fund supports Presbyterian Community Center.

Ann and Bill Scheer Fund

Established by the late Ann and Bill Scheer, this fund supports St. Jude Children's Research Hospital and Salesian Missions.

Edward R. and Barbara Scruggs Memorial Fund

Established by the late Edward B. and Barbara R. Scruggs, this fund is designated to support local organizations.

Terry Joan Steer Fund

Established by the late Terry Steer, this fund supports Christ Episcopal Church and the Episcopal Diocese in Southwest Virginia.

Melva Ruth Wise Stovall Charitable Gift Annuity

Established by Melva Ruth Wise Stovall, this fund will support The Rescue Mission of Roanoke, Inc.

Martha and Nelson Teague Fund

Established by Martha and Nelson Teague, this fund supports the needs of Child Health Investment Partnership.

Wings Scholarship Fund

Established by anonymous donors, this fund provides scholarship assistance to Southwest Virginia Higher Education Center.

Charles Whitescarver, Jr. Charitable Gift Annuities

Established by Charles Whitescarver, Jr., these funds support the Warm Hearth Foundation.

Henry L. Woodward Fund for Legal Aid Society

Established by J. Granger MacFarlane, II and Anne B. MacFarlane, this fund supports Legal Aid Society of Roanoke Valley.



DONOR ADVISED FUNDS



3K Fund

Established and advised by Kristopher Montgomery.

Jake Aldridge Memorial Fund

Established and advised by Mark Aldridge.

Anonymous Fund

The Community Foundation has multiple funds established by Anonymous donors.

Balzer and Associates Fund

Established and advised by Balzer and Associates, Inc.

Beau Justin Beasley Charitable Fund

Established and advised by Roger and Sherry Beasley.

James B. and June S. Blackstock Family Fund

Established and advised by James B. and June S. Blackstock.

The Blue Mountain Fund

Established and advised by Tom and Mary Evelyn Tielking.

Audrey U. Boggs Fund

Established by the late Audrey Boggs and advised by her children.

The John and Matilda Bradshaw Fund

Established and advised by John P. and Matilda H. Bradshaw, Jr.

Bundy Family Fund

Established and advised by Patricia and William Bundy.

Bennett S. Chaney Fund

Established and advised by Bennett Chaney.

Gael and Smith Chaney Fund

Established and advised by Gael and Smith Chaney.

Ruth Groves Chaney Memorial Fund*

Established and advised by J. Smith Chaney, Jr. and Nancy C. Dickison in memory of their mother, Ruth, and will honor her memory in the community.

Doris B. Chrisman Fund

Established by the late Dan A. Chrisman, this fund supports the History Museum, the Historical Society of Western Virginia, and the Raleigh Court United Methodist Church, and is advised by his son, D. Kent Chrisman.

The William M. Claytor Family Memorial Fund

Established through the estate of William M. Claytor and advised by family members.

The Clifton Family Fund

Established by Dorothy S. and the late Orrin W. Clifton and advised by Dotsy.

John D. and Mary S. Copenhaver Charitable Fund

Established by the late Mary S. Copenhaver and advised by her children.

Dennis R. and Elaine Milan Cronk Fund

Established and advised by Dennis and Elaine Cronk.

Harriet Davidson Memorial Fund

Established by the late Sigmund E. Davidson and advised by family members.

Karen Webb Davis Fund

Established by the late Karen Webb Davis and advised by Thomas Tye.

Eva and Calvert de Coligny Fund

Established by the late Eva and Cal de Coligny and advised by their son.

The DeVerter Charitable Fund

Established and advised by John S. and Ruth H. DeVerter.

Frank T. and Lucy Russell Ellett Fund

Established and advised by Frank and Lucy Ellett, this fund supports a wide range of important community needs with a special emphasis on environmental and educational issues.

Bill and Diane Elliot Fund

Established and advised by William D. and Diane W. Elliot.

Katherine Elliott Family Fund

Established and advised by Katherine Elliott.

Dr. Bob and Kay Finch Fund

Established by Kay B. the late Dr. Robert D. Finch and advised by Kay.

Alvin B. Fink Memorial Fund

Established and advised by Marc and Suzy Fink, this fund is used to attract and underwrite Jazz performances at The Jefferson Center, Roanoke, Virginia.

Katherine Nelson Fishburn Foundation Fund

Established through transfer of the K. N. Fishburn Foundation, a private foundation, to the community foundation, this fund provides grants primarily to social service, educational and cultural organizations and is advised by family members.

Fleisher Foundation Fund

Established and advised by Sonny Fleisher.

The Flippin Fund

Established and advised by G. Franklin Flippin and Sarah M. Copenhaver.

Bill and Bonnie Fox Family Foundation Fund

Established and advised by the Fox family.

J. Spencer and Joy Frantz Donor Advised Fund

Established and advised by James Frantz, Jr. and Robert Frantz.

Spencer and Joy Frantz Fund

Established and advised by J. Spencer and Joy D. Frantz.

William L. Freeland Sr. Memorial Fund

Established by the William L. Freeland Estate and other members of the community and advised by Tyler Freeland.

F. Fulton Galer Fund

Established and advised by Fulton Galer.

Rand and Jan Garrett Fund

Established and advised by Rand and Jan, this fund supports programs and agencies which address issues relating to infants and young children, generally but not exclusively from prenatal care through age two.

Robert E. and Clydenne R. Glenn Fund

Established by the late Robert E. and Clydenne R. Glenn and advised by their children.

Jean Glontz Foundation Fund

Established and advised by Gary E. Glontz.

H. Clay Gravely IV Memorial Fund

Established by family and friends of the late H. Clay Gravely IV and advised by an advisory committee.

Catherine J. Griffin Charitable Fund

Established and advised by Catherine Griffin.

Lucian Y. and June B. Grove Fund

Established by the late Lu and June Grove and advised by family members.

Hart of the Entrepreneur Fund

Established by family and friends of the late Bonsall "Bonzy" Hart and advised by an advisory committee.

Rodney M. Haynes Memorial Fund*

Established by family and friends in memory of Rodney M. Haynes, this fund will support causes that were special to Rodney.

Hudson-Williams Fund

Established and advised by an anonymous donor to honor the families of Raymond S. and Mary Hudson Williams.

A. Anson and Theresa G. Jamison Fund

Established through the estate of Theresa G. Jamison.

Peggy Johnson Hope for Children Fund

Established by Rudolph and Maureen Johnson and advised by Rudolph, Maureen and family members.

Dan and Nancy Karnes Fund

Established by Nancy and the late Daniel L. Karnes and advised by Nancy.

Jennifer Kirby Memorial Fund

Established and advised by The Kroger Company, this fund perpetuates the charitable interests of The Kroger Company and its late employee, Jennifer Kirby, through annual grants to the community.

Philip C. Kistler and Mary Kistler Bickford Fund

Established by the late Mary Kistler Bickford and advised her children Ashley Kistler, Gene Kistler, Kathy Craft and Elly Cote.

The Stan and Elise Lanford Family Fund

Established and advised by Stan and Elise.

William Jacob and Barbara Inez Boyle Lemon Fund

Established by William J. and the late Barbara B. Lemon, this fund supports a wide range of important community needs with a special emphasis on cultural activities, conservation and

preservation, social services and education as advised by Bill Lemon.

Cap't Til Lester Fund (In memory of G.T. "Cap't Til" and Lottie Shelton Lester)

Established and advised by George W. Lester II.

Rachel Alice Lewis Memorial Fund*

Established and advised by Charlotte Lewis Parsons in memory of Rachel Alice Lewis.

Mr. and Mrs. Samuel B. Long Fund

Established and advised by Sam and Sylvia Long.

MadLea Fund

Established and advised by Blaine and Robin Lewis.

The McClain Family Charitable Fund

Established and advised by Mark McClain.

The McClung Family Fund

Established and advised by Cathy Z. Ford and James T. McClung, Jr.

Tom and Deborah McDonald Fund

Established and advised by Tom and Deborah McDonald.

Sara L. and Samuel H. McGhee, III Fund

Established by the late Sara L. and Samuel H. McGhee, III, and is advised by Samuel H. McGhee, IV.

Robert F. McMillan Memorial Fund

Established and advised by Jackie McMillan.

Debra C. Meade Family Fund

Established and advised by Debra C. Meade.

Barton W. and Margaret J. Morris Fund

Established by the late Margaret and Barton Morris and advised by B. Wistar Morris, III and Ann J. Morris.

Marshall and Monika Mundy Fund

Established by Monika F. and the late Marshall Mundy and advised by Monika.

Music Education Fund

Established by Willy Pierre Jacoebee and Richard C. Henderson, this fund supports programs that bring the joy of music to needy children in the community.

My Hometown Fund

Established and advised by The Ramsey Foundation.

S. Kime Patsel Fund

Established and advised by S. Kime Patsel.

Lily Belle Patterson Memorial Fund

Established and advised by Clayton and Amber Patterson in memory of Lily Belle Patterson

Nancy and Ballard Pinkard Fund

Established by Nancy B. and the late Ballard F. Pinkard and advised by Nancy.

Doris and Roy R. Pollard, Jr. Fund

Established by the late Doris and Roy Pollard, this fund supports a wide range of important community needs with a special emphasis on underprivileged children as advised by their grandson, Cameron Roberts.

B. Wilson Porterfield, Jr. Foundation Fund

Established by the late Bittle W. Porterfield, III and Charlotte K. Porterfield through the transfer of the B. Wilson Porterfield Foundation, a private foundation, to the Community Foundation, this fund supports a wide range of community needs as advised by Charlotte K. Porterfield.

Ann Cecil Renick Fund

Established and advised by Ann Cecil Renick.

James and Nancy Revercomb Fund

Established by Nancy and the late Jim Revercomb and advised by Nancy.

The Peter and Elfleda Ring Fund

Established by Peter and the late Elfleda Ring and advised by Peter.

Roanoke Greek Festival Fund

Established and advised by the Roanoke Greek Festival Committee.

The Roanoke Valley Greenways Fund

Established by Pathfinders for Greenways, Inc. and advised by a local Advisory Committee, this fund supports local greenways efforts.

Roanoke Women's Foundation Founders Fund

Established by RWF to honor, and continue the involvement of, its founding women.

William and Margaret Robertson Fund

Established by the late William and Margaret Robertson, and advised by their children.

The Robertson Family Fund

Established by the late Thomas M. Robertson Sr. and advised by his children.

The Marty and Sherry Robison Family Fund

Established by Martin L. and the late Sherry R. Robison and advised by Marty.

Frank W. (Bo) Rogers, Jr. Fund

Established and advised by the family of the late Frank W. Rogers, Jr. and Woods Rogers, PLC, this fund supports a wide range of important community and educational needs.

Alan E. Ronk Executive Director's Discretionary Fund

Established by the Community Foundation Board of Governors and other community members and advised by Alan E. Ronk.

Frances Parker Rupert Memorial Fund for Music and the Performing Arts

Established by the late Burdette A. Rupert, Sr. and B.A. Rupert, Jr., this fund supports music and arts organizations in the Alleghany Highlands region and advised by Tammy Scruggs-Duncan.

Jim and Eliza Severt Fund

Established and advised by Jim and Eliza Severt.

Christopher Shoup Fund to Promote Mental Health and Prevent Substance Abuse

Established and advised by Barry L. and Cynthia M. Shelor in memory of Christopher Shoup, this fund promotes positive mental health and the alleviation, treatment, and prevention of alcohol and substance abuse in the community.

Skelly Family Fund

Established and advised by Martin O. Skelly.

Ralph K. Smith Fund

Established and advised by Ralph K. Smith.

The Spetzler Fund

Established by Bert and the late Clarine Spetzler, this fund supports a wide range of important

community needs with an emphasis on education and social opportunity as advised by Bert.

Stavola Fund

Established and advised by Tony and Diane Stavola.

The Sudan Fund

Established and advised by anonymous donors, this fund addresses a wide variety of important needs and opportunities through grants to eligible charitable agencies and missions working to serve the peaceable, physical and spiritual needs of Sudanese residents.

Nelson and Christina Teague Fund

Established and advised by Nelson and Christina Teague.

Ken and Sara Tuck Fund

Established and advised by Ken and Sara Tuck.

Ralph Joseph Walters Memorial Fund

Established and advised by Joe and Susan Walters, this fund supports a wide range of important community needs with a special emphasis on young children.

Mary and Douglas Waters Fund

Established and advised by Mary and Doug Waters.

The Barton J. and Jacqueline B. Wilner Family Fund

Established by Dorothy A. Wilner and advised by Barton J. and Jacqueline B. Wilner.

Ann Marie Wood Fund

Established and advised by Ann Marie Wood.

NON-ENDOWED FUNDS

The Foundation also administers numerous non-permanent advised Funds. Advised funds enable donors to periodically make recommendations for grants to qualified charitable organizations and are structured to make full or significant distributions of principal.

Donor advised funds are a great way for parents to involve their children in giving back to the community. By including sons and daughters as fund advisors, they develop a pattern of charitable giving and lifelong philanthropy.

RACHEL ALICE LEWIS MEMORIAL FUND



A Donor Advised Fund to Perpetuate the Memory of a Loved One

Rachel Alice Lewis's legacy will live on through a donor advised fund established within the Community Foundation by her mother Charlotte Parsons of Abingdon, VA. Her unexpected passing last year came as a great shock to her loved ones. Rachel was a force of nature throughout her life — adventurous, always on her next intellectual pursuit, deeply passionate about causes near and dear to her heart, and incredibly resolute. In high school, while competing nationally, she excelled in cross country, track, drama, and forensics. One day she could be seen in a play at the Barter Theatre, another day serving as a page in Virginia General Assembly. She went on to excel in her degree from William & Mary, and then her Master's Degree from Georgetown University. Rachel was passionate about her work with non-profits supporting voter rights, women's issues and the environment, and she became a staunch advocate for the importance of media and information literacy. While she loved her home in DC, Rachel had an abiding appreciation for the culture, people, and mountains of Southwest Virginia and was fiercely proud of her roots. She made the decision to move back to Abingdon in 2021. Her absence leaves behind a wound that will never heal, but to make some sense of her much-too soon passing, her mother chose to create the Rachel Alice Lewis Memorial Fund within Community Foundation Serving Western Virginia. This Fund, through its perpetual grants, will keep Rachel's name and memory alive in the community for generations to come.

(Portions of this article were extracted from Rachel's 2023 obituary.)



VIRGINIA HUNTERS WHO CARE



Virginia Hunters Who Care, founded in 1991, has spent over three decades providing food to those in need. Annually, the organization donates nearly 1 million quarter-pound servings of professionally processed venison to food banks, missions, churches, and other agencies across Virginia. These donations are provided at no cost, targeting individuals living in poverty, including the working poor, unemployed, underemployed, disabled, elderly, children, veterans, and the homeless.

The program relies on deer donated by hunters, farmers, and herd management efforts. These deer are processed by

enrolled professionals who skin, cut, wrap, and freeze the venison. The meat is then distributed to feeding programs throughout the Commonwealth, offering a critical source of high-protein, lean red meat to those facing food insecurity.



Beyond alleviating hunger, Virginia Hunters Who Care also contributes to deer population management. This helps reduce crop and ornamental damage, enhances public safety near roadways and airports, and controls the spread of tick-borne diseases.

A grant of \$8,000 from the Dr. John D. French Legacy Fund and the Martinsville Area Endowment Fund allowed the donation of more than 5,800 pounds of meat to local programs. The program has made a significant impact in Henry County, including the City of Martinsville and Patrick County. The anticipated outcome of this project is to strengthen support for feeding programs, alleviate their financial burdens, and improve the diets of those in need, ultimately helping them achieve self-sufficiency and a healthier, higher quality of life.

The precious grant the Hunters for the Hungry program received allowed us to provide more than 21,000 servings of essential high protein lean venison to men, women, children, the elderly, the homeless, and veterans struggling with food insecurity.

Gary Arrington
Program Director

1991

Organization
was founded



7.9M+

pounds of venison
processed
and distributed
since inception

780,000+
meals provided
annually statewide



50%

of clients served are
children and elderly



RENOVATION ALLIANCE

This grant funding has helped Renovation Alliance rebuild the homes of 17 homeowners in need in the Roanoke Valley community, ensuring our neighbors are able to reside in warm, safe, dry, and healthy homes.

Kendall Cloeter
Executive Director

Renovation Alliance (RA) provides essential home repairs at no cost to low-income homeowners, ensuring their homes are warm, safe, dry, accessible, and healthy. With the support of volunteers and skilled contractors offering services at reduced rates, the organization repairs 80 to 100 homes each year. To qualify, homeowners must have a gross household income at or below 80% of the Area Median Income, as defined by the U.S. Department of Housing and Urban Development. Priority is given to seniors aged 60 and older, individuals with disabilities, veterans and surviving partners, and families with young children.

Serving the Roanoke Valley, including the cities of Roanoke and Salem, and the counties of Roanoke, Botetourt, Craig, Floyd, and Franklin, Renovation Alliance focuses on improving the quality of life for vulnerable homeowners. Its repairs address critical needs like roof replacements, accessibility modifications, and HVAC repairs.

Renovation Alliance received \$50,000 from the Marion S. and Willie Z. Camp Fund for Eldercare. This grant will allow the organization to meet the repair needs of low-income seniors in Roanoke, Salem, and surrounding counties, with special attention to those living in rural areas. The funding will help rebuild the homes of eight older adults, focusing on vital repairs like roofing, accessible home modifications, and HVAC system replacements. Through these efforts, Renovation Alliance ensures that low-income seniors can remain safely in their homes while maintaining their independence and quality of life.

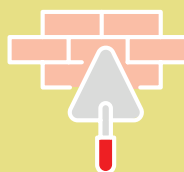


25 Years
of serving
homeowners in need
in the Roanoke Valley

Every \$1 donated
to RA delivers

\$5-\$7

in impact through
leveraged resources



RA offers essential no
cost home repairs for a

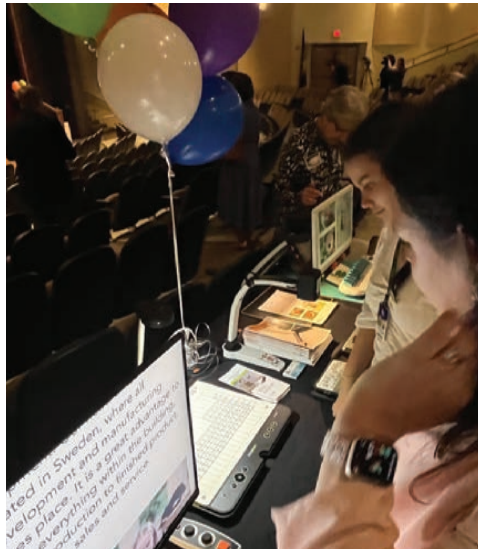
safer
healthier home

Volunteers contributed

8500+

hours to RA home
projects in 2024





EMIL AND EMMA LANG FUND FOR THE VISUALLY IMPAIRED

AN INCREDIBLE ESTATE GIFT TO THE COMMUNITY!

Emil and Emma Lang were married for 62 years, with Emil passing at the age of 101 in 2013. Six years later, Emma passed at the age of 98.

In their estate plan, the Langs provided for a very significant gift to the Community Foundation, one which would establish a field-of-interest fund for the visually impaired. The Fund is, in fact, the Community Foundation's largest endowed fund.

This year, the Foundation awarded the first Lang grant in the amount of \$395,000 to Roanoke City Public Schools. The funds will allow RCPS to improve accessibility, update all Braille signage, and provide cutting-edge technology for visually impaired students across all grade levels, including vision screening devices, white canes to support independence, and related assistive technology and devices to support instruction and independence. The grant represents the Foundation's beginning efforts to put this community 'on the map' over time as a national leader in how it supports and values its visually impaired citizens, all through the wonderful generosity of Emil and Emma!

While Foundation staff did not have the privilege of personally knowing the couple, we have an idea of their life based on her obituary:

Those who knew Emma remember her as a person who loved doing things with her hands from sewing to baking to gardening. She had so much talent. She had the ability to share her love with family and friends alike, with a keen sense of making all those around her smile and feel the warmth of her love.



Roanoke City Public Schools and the Community Foundation hosted a press conference to announce an impactful grant made possible by the Lang Estate. Attendees had the opportunity to explore various new tools and equipment that will support visually impaired students in the school system.



AGENCY ENDOWMENT FUNDS



Apple Ridge Farm Endowment Fund

Blue Ridge Parkway Foundation Trust

Established through the generosity of Bud and Brenda Hilton to encourage others to protect and preserve the Blue Ridge Parkway.

The Shirley and Cabell Brand Fund (for TAP)

Established by TAP through the support of nearly 200 individuals, corporations, foundations and organizations in honor of Cabell Brand's long service to the community.

Charity League of Martinsville and Henry County Fund

CHIP of Roanoke Valley Fund

The Walter P. Dungan Literacy Fund, Literacy Volunteers of Roanoke Valley

Historic Fincastle, Inc. Endowment Fund

History Museum & Historical Society of Western Virginia's David H. Burrows Endowment Fund

Established by the Museum through the generosity of David Burrows to support the Crystal Spring Pumping Station.

History Museum & Historical Society of Western Virginia Kegley Publication Fund

Established by the Museum through the generosity of the Kegley family to support the Kegley Publication Fund.

Historical Society of W. VA — Vinyard-Showalter

Established by the Museum through the generosity of W. Darnall Vinyard to inspire others to provide endowment resources for the long-term benefit of the agency.

The Barbara B. Lemon Fund for the Blue Ridge Land Conservancy

Martinsville City Public Schools Endowment Fund

Martinsville Henry County Family YMCA Endowment Fund

Mill Mountain Theatre Fund

Mill Mountain Zoo Fund

Partners for SUCCESS Fund

Established by Roanoke City Schools.

Planned Parenthood Health Systems, Inc. Fund

Presbyterian Community Center Fund

Suzanne R. Ranson Endowment for Hospice Excellence

Established through the generosity of Dr. and Mrs. George K. Bowers and two anonymous donors.

The Rescue Mission Fund

The following funds were established as Charitable Gift Annuities to benefit The Rescue Mission Fund:

Stella M. and Grover C. Agee Fund
Richard Allfather and Julia M. Horner Fund
Thomas L. Ayers Fund
Lillian S. Brown Fund
Burt C. Horne, Jr. Fund
Walter M. Lockett Fund
Mary H. Milan Fund
Betty D. and Jimmy T. Moore Fund
Mabel R. Naff Fund
Nancy B. Robertson Fund

Roanoke Adventist Preparatory School Endowment Fund

Roanoke Area Ministries Fund

Roanoke Valley S.P.C.A. Endowment Fund

United Way of Roanoke Valley, Inc. Fund

Warm Hearth Foundation Fund

The following funds were established as Charitable Gift Annuities to benefit Warm Hearth:

Lee B. Brown Fund
Howard Feiertag
Kenneth L. Murdock Fund
Howard Picard Fund
Charles Whitescarver



WOMEN IN PHILANTHROPY



Ms. Nancy Baker
Mrs. Carolyn E. Baptist
Mrs. Clarke S. Beckner
Mrs. Page B. Beeler
Mrs. Kimberly P. Boyd
Miss Laura Bowles
Mrs. Gael Chaney
Mrs. Ruth Groves Chaney*
Ms. Martha S. Cooper
Mrs. Rebecca Crabtree
Ms. Susan Critz
Mrs. Judy N. Dashoff
Mrs. Nancy B. Davis
Dr. Nicole DeShon-Nelson
Mrs. Jill G. Dickens
Mrs. Mary Kate S. Dillon
Mrs. Imogene H. Draper
Dr. Margie B. Eason
Mrs. Cindy King Edgerton
Mrs. Sarah Fain
Mrs. Martha B. Farrell
Mrs. Ann Favero
Mrs. Bonnie Favero
Mrs. Sandra T. Ford
Ms. Karen Franklin
Mrs. Paige D. Frith
Ms. Marsha E. Frith
Mrs. Linda H. Gale

Mrs. Marty Gardner
Mrs. Judith Garland
Mrs. Olivia Garrett
Mrs. Jo Grayson
Mrs. Tracie Heavner
Mrs. Vickie Helmstutler
Mrs. Elizabeth M. Holsinger
Ms. Carol Hooker
Mrs. Linda W. Isley
Ms. Cecelia R. Johnson
Mrs. Lori Kessman
Mrs. Carole G. Kiser
Mrs. Lynn H. Korff
Mrs. H. Elizabeth Kormos
Mrs. Amy P. Lampe
Mrs. J.D. Lester
Ms. Elizabeth Lester
Mrs. Susan S. Lester
Mrs. Katherine W. Long
Mrs. Anne V. Madonia
Langhorne Mauck*
Ms. Charlotte W. McClain
Mrs. Tonie S. McMillan
Mrs. Carole Mercer
Mrs. Janet D. Mohr
Mrs. Linda Byrd Moore
Mrs. Lynanne Newman
Mrs. Nancy Philpott

Mrs. Betty Barnes Pigg
Mrs. Ashby C. Pinkard
Mrs. Christine B. Poirier
Mrs. Ann Reaser
Mrs. Carol A. Stone Rebmen*
Mrs. Lewis S. Riddle
Mrs. Martha Rollins
Mrs. Eliza H. Severt
Mrs. Elizabeth R. Sibbick
Mrs. Irma Smart
Mrs. Tiffany Smart
Mrs. Kim Snyder
Mrs. Joyce Staples
Mrs. Catherine R. Stone
Mrs. Bernadette Stowe
Mrs. Tracy Tate
Mrs. Lorrie Teegen
Mrs. Julie Hairfield Thomas
Nancy Thomas*
Mrs. Jackie Thornton
Miss McKay Ullstein
Mrs. Elizabeth M. Walker
Mrs. Susan Warren
Mrs. Stuart Webster
Mrs. Sarah M. Whitmore
Mrs. Roslyn Wingett
Ms. Ellen L. Wood

*Posthumous Members

The Women In Philanthropy (WIP) giving group celebrated its 15th anniversary this year. For fiscal year 2024, the group consisted of 81 women who agreed to the \$500 annual commitment. To date, WIP has awarded \$536,500 in grants and holds an endowment totaling over \$240,000.

WOMEN IN PHILANTHROPY GRANTS AWARDED

Blue Ridge Regional Library Foundation received \$10,000 for the Bassett Branch Library Expansion. This project includes an additional 4,000 square feet of new space, renovations to 6,000 square feet of existing space, and will include a new children's area and free community meeting room.

Friends of Infinity Acres Ranch was awarded \$20,000 for a farm utility vehicle for animal care. The vehicle will assist staff in performing ranch operations and maintenance and be utilized by ENABLE, the nonprofit's therapeutic animal day support program for individuals with intellectual disabilities.

Southern Area Agency on Aging was awarded \$15,000 for its Volunteer Driver Program. This will provide non-emergency medical transportation for out-of-town medical appointments to seniors, individuals with disabilities, and low-income individuals.





GRANTS

Through the wonderful generosity of many donors, the Foundation awarded more than 1,100 grants and scholarships totaling almost \$4.2 million in fiscal year 2024. The grants ranged from \$100 to \$500,000. Many of the organizations listed below received multiple grants.

2006 Vinton War Memorial Vision Committee Inc.
 Adult Care Center of Roanoke Valley
 Agrarian Land Trust — Southwest Virginia
 Agrarian Commons
 Alleghany Highlands Arts Council
 American Center for Law and Justice
 American Leprosy Missions
 American Red Cross — Blue Ridge Chapter
 American Red Cross — Roanoke Valley Chapter
 American Society for Technion
 Angels of Assisi
 Appalachian School of Law
 Appalachian Trail Conservancy
 Apple Ridge Farm, Inc.
 ASK Childhood Cancer Foundation
 Atwill Memorial Chapel Association
 Austin Creative Reuse
 Averett University
 Barrier Islands Free Medical Clinic, Inc.
 Bassett Community Center
 Bassett Public Library Association Inc. dba
 Bassett Historical Center
 Bassett Volunteer Fire Company Inc.
 Bassett Volunteer Rescue Squad Inc.
 Bedford Christian Ministries
 Bedford Community Christmas Station Inc.
 Belmont Baptist Church Roanoke
 Belmont University
 Bent Mountain Volunteer Fire Department
 Bethel United Methodist Church
 Beyond Boundaries
 Blue Ridge Area Food Bank
 Blue Ridge Independent Living Center Inc.
 Blue Ridge Institute and Museum of Ferrum College
 Blue Ridge Land Conservancy
 Blue Ridge Literacy
 Blue Ridge Parkway Foundation
 Blue Ridge PBS
 Blue Ridge Regional Library Foundation
 Bluefield University

Botetourt Resource Center
 Bowling Green State University
 Boxfit
 Boy Scouts of America,
 Blue Ridge Mountains Council
 Boys & Girls Clubs of Southwest Virginia
 Boys & Girls Clubs of the Blue Ridge
 Bradley Free Clinic
 Bridgewater College
 Broad Street Christian Church
 Bryan College
 Campus Crusade for Christ
 Capitol Commission Inc.
 Carilion Clinic Foundation
 Carlisle School
 Carmelite Sisters for the Aged and Infirm
 Catholic Committee of Appalachia
 Catholic Near East Welfare Association
 Catholic Relief Services Inc.
 Cave Spring Rescue Squad
 Center for Nonprofit Excellence
 Center in the Square
 CFACT
 Charity League of Martinsville & Henry County
 Child Health Investment Partnership
 of Roanoke Valley
 Children's Assistive Technology Service
 Children's Trust Roanoke Valley
 Chosen Vale Inc.
 Christ Episcopal Church
 Christa McAuliffe Elementary School
 Christendom College
 Christmas Cheer Inc.
 Christopher and Dana Reeve Foundation
 Clean Valley Council
 College Foundation of the University of Virginia
 College of William and Mary
 Collinsville Volunteer Fire Company Inc.
 Community Christmas Store

Community Dream Center
 Community School
 Community Storehouse
 Community Youth Program at St. John's
 Connect Health + Wellness
 Converse College
 Council of Community Services
 Covenant Presbyterian Church
 Craig County Child Care Center
 Craig County Historical Society
 Craig County Rescue Squad/EMS
 Craig County Youth & Community Services Board
 Cross Catholic Outreach
 Cultural Arts for Excellence, CAFE
 Dan River Basin Association
 Danville Community College
 DePaul Community Resources
 Disability Rights and Resource Center Inc.
 Disaster Relief Food Ministry Inc.
 Dobyns-Bennett High School
 Dogwood Festival of Virginia Inc.
 Duke University
 Earthjustice
 East Carolina University
 East Tennessee State University
 Easter Seals UCP North Carolina & Virginia Inc.
 Eckerd College
 Edward Via College of Osteopathic Medicine
 Edwards Adult Day Care Center
 Emory & Henry College
 EMU — Center for Justice and Peacebuilding
 Enfield Public Library
 Episcopal Diocese of Southwestern Virginia
 Episcopal High School
 Episcopal Relief and Development
 Explore More Discovery Museum
 Falling Spring Evangelical Presbyterian Church
 Family Promise of Greater Roanoke
 Family Service of Roanoke Valley
 Feeding Southwest Virginia

Ferrum College	Hospice of Surry County dba Mountain Valley Hospice & Palliative Care	National D-Day Memorial Foundation
Fieldale-Collinsville Volunteer Rescue Squad Inc.	Houghton University	National Legal and Policy Center
First Baptist Church of Martinsville	Huddle Up Moms	National Outdoor Leadership School
First Baptist Church of Roanoke	Island Cat Allies	National Soaring Museum Inc.
First Presbyterian Church	James Madison University	National Society of Black Engineers—MHC
First Tee of the Roanoke Valley	Jefferson Center Foundation	National Wildlife Federation
First United Methodist Church	Johnson University	Nature Conservancy
Five Points Music Foundation	Judicial Watch	New Castle Christian Church
Floyd Center for the Arts Inc.	Juvenile Diabetes Research Foundation	New Castle Volunteer Fire Department
Floyd Community Educational Association	Kids on Point Inc.	New Freedom Farm Inc.
Floyd County Historical Preservation Trust	Kimoyo LTD.	New River Alliance of Climbers Inc.
Floyd County Volunteer Fire Department — Station 3	Kindling Ministries	Norfolk State University
Fork Mountain Volunteer Rescue Squad	Kiwanis Foundation of Roanoke	North Carolina A&T State University
Foundation for Rehabilitation Equipment and Endowment	Kuumba Community Health & Wellness Center, Inc., dba New Horizons Healthcare	North Carolina State University
Franklin County Humane Society Inc.	Lake Forest College	North Cross School
Free Clinic of Franklin County	Lebanon Memorial United Methodist Church	Northport Performing Arts Center
Friends of Infinity Acres Ranch	Legal Aid Society of Roanoke Valley	Northwest Family Services Inc.
Friends of RCACP	Legion of Christ College Inc.	Now I Lay Me Down to Sleep
Friends of the Blue Ridge Parkway	Lenoir-Rhyne University	NRA Whittington Center
Friends of the Blue Ridge Regional Libraries Inc.	Liberty University	Oak Level Baptist Church
Friendship Foundation	Lincoln Memorial University — Knoxville	Oak Level Ruritan Club
Friendship House Roanoke Inc.	Living Tongues Institute for Endangered Languages	Ohio State University
Garth Newel Music Center	Local Colors of Western Virginia	Old Dominion University
George Mason University	Local Environmental Agriculture Project	Old Salem Church
Georgia Institute of Technology	Local Office on Aging	One Valley Inc.
Girl Scouts of Virginia Skyline	Longwood University	Opera Roanoke
Girls on the Run Central Virginia and Blue Ridge	Louisiana State University	Operation Sight
Glenvar High School — Theatre Arts Dept.	LovABLE Services Inc.	Oral and Maxillofacial Surgery Foundation
God's Pit Crew Inc.	LSUHSC School of Dentistry	Orchard Hills Achievement Center
Good Samaritan Hospice Inc.	Lutheran Family Services of Virginia dba enCircle	Orchard School Foundation
Goodwill Industries of the Valleys	MARCH Workshop Inc.	Our Lady of Nazareth Catholic Church
Goucher College	Martinsville Cemetery Association	Partnership for Community Wellness
Grace Episcopal Church, Ca Ira	Martinsville City Schools	Pathfinders for Greenways
Grace Network of Martinsville & Henry Co. Inc.	Martinsville Henry County Chambers	Patrick & Henry Community College
Grandin Theatre Foundation Inc.	Partnership for Economic Growth	Patrick & Henry Community College Foundation
Habitat for Humanity in the Roanoke Valley	Martinsville Henry County Economic Development Corporation	Patrick Henry Athletic Boosters Association
Habitat for Humanity of Franklin County	Martinsville High School	Piedmont Arts Association
Haiti Education Foundation Inc.	Martinsville-Henry County Crime Stoppers Program Inc.	Piedmont Virginia Community College
Hampton University	Martinsville-Henry County Family YMCA	Pikeville High School Alumni
Harrison Museum of African American Culture	Martinsville-Henry County Historical Society	Planned Parenthood South Atlantic
Hasten, International	Mary Baldwin University	Planned Parenthood South Atlantic — Roanoke
Hazel Y. Clark Patrick County Public Animal Shelter	Maryknoll Fathers and Brothers	Plenty!
Healing Strides of VA	Maryknoll Sisters	Points of Diversity Inc.
Henry County Food Pantry	Massachusetts Institute of Technology Koch Institute	Pregnancy Care Center of MHC
Henry County Public Schools	Media Reform SC Inc.	Presbyterian Community Center
Heritage Foundation	Mill Mountain Garden Club Inc.	Priests of the Sacred Heart
Herman L. Horn Elementary School	Mill Mountain Theatre	Princeton University
High Point University	Mill Mountain Zoo	Putnam City High School Alumni Association Inc.
Hillsdale College	Mount Holyoke College	QuickStart Tennis of Central Virginia
Historic Fincastle Inc.	Mountain Gateway Community College	Radford University
Historical Society of Western Virginia	Mpanzi Empowering Women and Girls Inc.	Radford University Carilion
Hollins University	Myers Park United Methodist Church	Radford University Foundation
Hollins University	NASCAR Technical Institute	Raleigh Court Presbyterian Church
Hope to Walk		Raleigh Court United Methodist Church
HopeCo		Randolph College
HopeTree Family Services		REACH
Horizon Opportunities Inc.		Regent University

Renovation Alliance
 Rescue Mission of Roanoke
 Restoration Housing
 Rhode Island School of Design
 Roanoke Adventist Christian School
 Roanoke Appalachian Trail Club
 Roanoke Area Ministries
 Roanoke Asylum-Seekers Support Network
 Roanoke Catholic School
 Roanoke City Public Schools
 Roanoke City Public Schools Education Foundation Inc.
 Roanoke College
 Roanoke County Fire & Rescue
 Roanoke Outside Foundation
 Roanoke Public Library Foundation
 Roanoke Refugee Partnership
 Roanoke Symphony Orchestra
 Roanoke Valley Chess Club
 Roanoke Valley Governor's School Foundation
 Roanoke Valley Horse Rescue Inc.
 Roanoke Valley SPCA
 Roanoke Valley Tennis Association
 Roanoke Wildlife Rescue
 Roanoke Women's Foundation
 Rockingham Community College
 Ronald McDonald House Charities of Southwest Virginia
 Rose-Hulman Institute of Technology
 Safari Club International Foundation
 Safetynet Inc.
 Saint Francis Service Dogs
 Salem / Roanoke County Food Pantry
 Salem Area Ecumenical Ministries
 Salem College
 Salem Educational Foundation and Alumni Association
 Salem Museum and Historical Society
 Salem Rescue Squad
 Salesian Missions Inc.
 Samaritan's Purse
 Science Museum of Western Virginia
 Second Amendment Foundation
 Second Presbyterian Church
 Sexual Assault Response & Awareness Inc.
 Shriners Hospital for Children
 Simmonsville Volunteer Fire Department
 Smile Train Inc.
 Smiles4Tab
 SML Good Neighbors Inc.
 South Carolina Junior Golf Foundation
 Southern Area Agency on Aging Inc.
 Southern Environmental Law Center
 Southern Virginia Child Advocacy Center
 Southside Survivor Response Center Inc.
 Southwest Virginia Higher Education Center Foundation
 Southwest Virginia Wildlife Center of Roanoke Inc.
 SPCA of Martinsville and Henry County
 Special Olympics Virginia — Southwest Region
 Spencer-Penn Centre
 Spikenard Farm Honeybee Sanctuary
 St. Andrews Roman Catholic Church
 St. Catherine's School Foundation
 St. Christopher's School
 St. John's Episcopal Church
 St. Jude Children's Research Hospital
 St. Mark's Lutheran Church/The Lion's Share
 St. Paul's Episcopal Church
 Staff Sergeant Michael Ollis Freedom Foundation
 Staunton Augusta Waynesboro Habitat for Humanity
 Stephen Siller Tunnel to Towers Foundation
 Stepping Stone Mission of Franklin County Inc.
 Straight Street
 SUNY Cortland
 Tackfully Teamed Riding Academy Inc.
 Taubman Museum of Art
 Temple Emanuel
 The Advancement Foundation
 The ALS Association DC/MD/VA Chapter
 The Art Students League of New York
 The Autism Program of Virginia dba Commonwealth Autism
 The Battle Within
 The Bee Cause Project Inc.
 The Humble Hustle Company
 The June Bug Center Inc.
 The Junior Golf Foundation of Virginia
 The Leadership Institute
 The Salvation Army Martinsville Service Center
 The Salvation Army of Roanoke
 The Shepherds Table
 The Sierra Club Foundation
 The Village Chapel
 The Wellness Wagon
 The Wild Way
 Theatreworks Community Players Inc.
 Third Serve Inc.
 Thursday Morning Music Club
 Total Action for Progress
 Trident Academy Inc.
 Trinity College
 Trinity Ecumenical Parish
 Tudor House
 Turn the Page
 Turning Point USA
 Union Presbyterian Seminary
 Unitarian Universalist Church of Roanoke
 United States Sportsmen's Alliance Foundation
 United Way of Henry County & Martinsville Inc.
 United Way of Roanoke Valley Inc.
 University of Charleston
 University of Chicago
 University of Cincinnati
 University of Lynchburg
 University of Mary Washington
 University of Maryland Global Campus
 University of North Carolina-Chapel Hill
 University of Tennessee Foundation
 University of Virginia
 University of Virginia's College at Wise
 USA Shooting
 Verge
 Vinton Area Chamber of Commerce
 Vinton Historical Society/Vinton Museum
 Virginia Breast Cancer Foundation
 Virginia Commonwealth University
 Virginia Cooperative Extension - Botetourt
 Virginia Harm Reduction Coalition
 Virginia Hunters Who Care Inc.
 Virginia Institute of Autism
 Virginia Lions Eyeglass Recycling Inc.
 Virginia Museum of Natural History Foundation
 Virginia Museum of Transportation
 Virginia Outdoors Foundation
 Virginia Sheriff's Institute
 Virginia Tech
 Virginia Tech Foundation Inc.
 Virginia Western Community College
 Virginia Western Community College Educational Foundation Inc.
 Volunteer Montgomery
 W. E. Cundiff Elementary School
 W. E. Skelton 4-H Educational Conference Center
 Wagner College
 Warm Hearth Foundation
 Washington and Lee University
 Washington and Lee University School of Law
 West End Center
 West Virginia School of Osteopathic Medicine
 Westminster Presbyterian Church of America
 Westtown School
 William Byrd High School
 William Byrd Middle School
 Wings for Kids Inc.
 Woodberry Forest School
 Wounded Warrior Project Inc.
 YMCA of Virginia's Blue Ridge
 Young Audiences of Virginia Inc.
 Young Life
 Young Life of North Roanoke and Salem
 Youth Sports Incorporated

PUBLIC SUPPORT

FOUNDING DONORS (ENDOWMENT)

It is a privilege to recognize a special group of individuals, families, private foundations and nonprofit organizations who established permanent endowment funds during the Foundation's critical early years. These visionary donors saw the importance of endowing a community foundation that would provide significant resources to enrich the quality of life for current and future generations of Roanoke Valley citizens. Funds created by the donors listed below were put in place through outright gifts by December 31, 1996.

Such Funds helped the Foundation reach and exceed its initial "critical mass" endowment goal of \$5 million.

In recognition of this support, each donor will be recognized in perpetuity as a "Founding Donor."

James R. Alvis, Jr. Family and Friends	Katherine Nelson Fishburn Foundation —	Partners for SUCCESS
Dorothy S. Anderson	Sally Fishburn Crockett and	(Roanoke City Schools)
Anonymous	Robert N. Fishburn	Martin J. "Jake" Patsel, Jr.
Polly B. and M. W. Armistead, III	Anson, Theresa and Paul Jamison	Planned Parenthood of the Blue Ridge, Inc.
Suzanne and Benjamin Bazak	Melva P. Jones	Doris W. and Roy R. Pollard, Jr.
Mary Kistler Bickford	Reid Jones, Jr.	B. Wilson Porterfield, Jr. Foundation —
Blue Ridge Community Services	Louise F. Kegley	Bittle W. Porterfield, III
Edith P. and Frank W. Bova	Doris W. and Weldon T. Lawrence, Jr.	Burdette A. Rupert, Sr.
Julie and Abney S. Boxley, III	Barbara B. and William J. Lemon	Burdette A. Rupert, Jr.
Elizabeth H. and Frank A. Boxley and Family	Sidney Louis	Julie T. and Ronald M. Staggy
Sadie M. Boyle	Frank W. Martin	Jean and Jay Thomas
Martha Boxley Creasy	Margaret and Barton W. Morris	Total Action Against Poverty
J. W. "Bill" Davis	Jess Newbern, III	United Way of Roanoke Valley, Inc.
Ruth H. and John S. DeVerter	Lewis S. Parsley	Susan and Joe Walters

THE SOCIETY OF FOUNDERS (ADMINISTRATIVE)

The Society of Founders recognizes donors who have made gifts of \$25,000 or more to the Foundation to support its administrative operations — either through contributions to the annual operating fund or to the administrative endowment.

Adams Foundation	Norfolk Southern Corporation
American Electric Power	Estate of William H. Pettigrew
Anonymous	B. Wilson Porterfield, Jr. Foundation
Beirne Carter Foundation	Trina B. Ramzinsky
Sally F. Crockett	Roanoke Electric Steel Corp.
Foti, Flynn, Lowen & Company, P.C.	The Roanoke Times
The Harvest Foundation	Shenandoah Life Insurance Company
Gene A. Hylton	SunTrust Bank
Heidi F. Krisch	Glenn O. Thornhill, Jr.
Margaret and Barton Morris	Wachovia
Charles Stewart Mott Foundation	Richard G. West

Please note that some of the donors recognized on pages 40–41 are now deceased. We are so grateful for their generosity over the years.

THE LEGACY SOCIETY

The Foundation's Legacy Society recognizes those individuals and families who have included or did include the Community Foundation in their estate plan. We are deeply honored to recognize the members shown below. Future estate commitments from Legacy Society members and from others who prefer to remain anonymous at this time now total more than \$170 million. These future gifts will play a critical role in further strengthening this community for generations to come.

Anonymous

Mrs. Eleanor W. Alvis
Donald R. Amos for the James R. and
Ethel H. Amos Fund
Dorothy S. Anderson
Willis M. Anderson
Nathaniel A. and Dorothy D. Back
Frank W. "Bill" Bova, Jr. and Ruth J. Bova
Mr. and Mrs. Robert L. Bradshaw Jr.
Mrs. Mary L. Brodie
Mr. and Mrs. William M. Claytor
Orrin and Dotsy Clifton
M. Rupert Cutler and Brenda McDaniel
Sherry W. Davidson
Walter M. Dixon Jr.
Janet Lynn Donnary
Earl D. Doran
Frank T. Ellett and Lucy R. Ellett
Gordon and Susan Ewald
Shirley W. Fletcher
Mr. and Mrs. James A. Ford
Rand and Jan Garrett
Lloyd Gochenour
Nancy and Bud Goehring
Sarah and Kossen Gregory for the
Kossen Gregory Jr. Memorial Fund
Lucian Y. and June B. Grove
Charles F. A. Hall III

Zelda and Julius Halpern
Samuel C. Hill
Mrs. Anne Crable Hurt
Dr. and Mrs. Robert S. Hutcheson Jr.
Gene A. Hylton
Theresa and Anson Jamison
The John W. Johnston Family
Melva P. Jones
Mr. Mark S. Journell
Mr. and Mrs. Guy Kinder
Mr. and Mrs. Forrest Landon
Stan and Elise Lanford
Mr. and Mrs. John L. Leftwich
Evelyn L. Lewis
Thomas and Betsy Little
Camille M. Lownds
Frank and Martha Clay Martin
Samuel B. McGhee
Richard F. and Cheryl A. McIntyre
Dr. Julien Meyer Sr.
Dr. and Mrs. Julien H. Meyer Jr.
Walter Muir
Dorothy G. Murray
Wallace C. Nunley Sr.
Yvonne S. Olson
Walter M. "Bill" Otey III
Ms. Sandra L. Overstreet
John and Sarah Belle Parrott

Lewis S. Parsley
Nancy Ruth Patterson
Estate of William H. Pettigrew
Doris W. and Roy R. Pollard, Jr.
Louis and Agnes Popp Fund
Carol and Robert Pruner
Mrs. Carolyn L. Rakes
Trina B. Ramzinsky
Thomas M. Robertson Sr.
Margaret M. and William H. Robertson Fund
Mr. and Mrs. Frank W. Rogers III
Alan E. Ronk
William H. and Anna B. Scheer
Mr. William A. Scott Jr.
Ed and Barbara Scruggs
Constance Roberta Smith
Garnett E. and Patsy T. Smith
Jackie and S.L. Spangler
Neil and Michelle Treger
Kenneth D. Twitchell
Richard and Gail Ungerer
Mrs. Claiborne Vinyard
Joe and Susan Walters
Mike and Carolyn Warner
Mary L. and Douglas C. Waters
Vera Bryant Williams
Barbara Wise
Walter K. and Kimberley A. Young



FRIENDS OF THE FOUNDATION

We are honored to recognize donors who give annual administrative support to the Community Foundation in the amount of \$500 or more as "Friends of the Foundation" for that fiscal year. The support of our "Friends" is vital to keeping the Foundation strong and vibrant as we work hard to make our communities even better places for all.

Mrs. Doris Berry
Mr. and Mrs. James B. Blackstock
Mr. and Mrs. Robert L. Bradshaw Jr.
Mr. and Mrs. George B. Cartledge Jr.
Mr. and Mrs. J. Smith Chaney Jr.
Mr. Raymond G. Cobb
Mr. and Mrs. W. Patton Coles IV
Mrs. Molly Cramer
Mr. and Mrs. Roy Vogel Creasy
Dr. Hoyer and Mr. John M. Duckworth
Dr. and Mrs. Saju S. Eapen
Drs. Paul and Margie Eason
Mr. and Mrs. Frank T. Ellett
Mr. and Mrs. William D. Elliot
Mr. and Mrs. Jay E. Frith II
Mr. Jim Frith and Ms. Tracie Heavner
Mr. and Mrs. J. Randolph Garrett III
The Honorable and Mrs. Robert Goodlatte
Drs. Will and Karlie S. Griffeth

Ms. Catherine J. Griffin
Mr. and Mrs. Johnny L. Guilliams
Mr. and Mrs. Wilbur L. Hazlegrove
Ms. Johanna M. Henretta
Mr. and Mrs. William T. Hensley
Mrs. Doris Higginbotham
Mr. and Mrs. Courtney Hoge
Mrs. Ann Morris Jarrett
Mrs. Esther W. Johnson
Kaladaali Empower Inc.
Thomas G. Karrasch Charitable Fund
of Community Foundation for a
Greater Richmond
Mr. Robert Kegley
Mr. Talfourd H. Kemper
Mr. and Mrs. William J. Lancaster
Mr. and Mrs. James B. Lee
Mr. and Mrs. George W. Lester II
Dr. and Mrs. Eugene C. Madonia

Dr. and Mrs. Raymond F. Mallinak
Dr. James T. McClung and Dr. Cathy Z. Ford
Mr. and Mrs. Rick Mercer
Mr. Wistar Morris and Mrs. Karen Moran
Mrs. Jennie Sue Murdock
Mr. and Mrs. Steve Musselwhite
Mr. and Mrs. William A. Nash
Mr. and Mrs. William L. Pannill
Mr. S. Kime Patsel
Mr. and Mrs. John T. Pinkard
Dr. Randall R. Rhea
Mr. and Mrs. Harry S. Rhodes
Mr. and Mrs. Frank W. Rogers III
Ms. Nancy Rogers
Dr. and Mrs. John T. Tielking
The Honorable and Mrs. Philip Trompeter
Mr. and Mrs. Barry Wirt



CHOOSING YOUR OWN INVESTMENT MANAGER

While the Foundation maintains a well-diversified and professionally managed investment portfolio for its hundreds of endowment funds, there may be times when donors want to continue an existing relationship with a particular investment firm and specific advisor.

Under our "Charitable Investment Relationship Policy," donors who set up a fund within the Foundation for \$1 million or more now have that option. We will be happy to provide full details as appropriate.



DONORS

We are honored to recognize and thank the following donors who made administrative or endowment gifts or gifts-in-kind during the 2024 fiscal year. We work diligently to ensure the accuracy of this listing. However, if you find an error or omission, please accept our sincere apology and let us know.

Mrs. Nancy Howell Agee
Steve & Tanya Alley
Ms. Mary Beth Alphin
Ameristaff, Inc.
Arthur M. Squires Irrevocable Trust
Pamela Atwell
Mrs. Ann H. Austin
Avis Construction Company, Inc.
Dr. and Mrs. Richard G. Bailey
Ms. Nancy Baker
Balzer & Associates, Inc.
Mrs. Carolyn E. Baptist
Mr. David A. Barnhart
Barton & Margaret Morris Charitable Lead Trust
Dr. and Mrs. Vincent T. Basile
Mrs. Sherry Beasley
Mrs. Clarke S. Beckner
Mrs. Page B. Beeler
Ms. Dora A. Bennett
Mrs. Doris Berry
Mr. Neil V. Birkhoff
Mr. and Mrs. James B. Blackstock
Blue Ridge Bank
Mrs. Kimberly P. Boyd
Boys & Girls Clubs of Southwest Virginia
Mr. and Mrs. Robert L. Bradshaw Jr.
Brown Advisory Charitable Foundation
Mr. and Mrs. Whitney Brown Jr.
Ms. Mickey R. Bryarly
Mrs. Paula M. Burnette
Amanda Camden
Mr. and Mrs. George B. Cartledge Jr.
Ms. Louise K. Chagnon
Mr. and Mrs. J. Smith Chaney Jr.
Mr. Bennett S. Chaney
Mrs. Dorothy S. Clifton
Mr. Raymond G. Cobb
Cogburn/Faris Foundation
Mr. and Mrs. W. Patton Coles IV

Joan Marie Colosimo
Mr. Glen C. Combs
Ms. Martha S. Cooper
Dr. and Mrs. Mark Crabtree
Mr. and Mrs. Michael L. Craig
Mr. and Mrs. Roy Vogel Creasy
Mrs. Susan Critz
Mr. and Mrs. Dennis R. Cronk
Mr. and Mrs. Gregory L. Cundiff
D & M Martin Inc.
Mrs. Judy N. Dashoff
Steven and Sherry Davidson
Steven Davidson
Mrs. Nancy B. Davis
Mrs. Peggy C. Davis
H. Michael Deneka Esq.
Dr. Nicole DeShon-Nelson
Dr. and Mrs. John S. DeVerter
Mrs. Jill G. Dickens
Mrs. Nancy C. Dickison
Mr. James M. Dillon CPA
Mr. and Mrs. Glenwood R. Dobbins
Ms. Robyn N. Dobyns
Downtown Roanoke, Inc.
Mrs. Imogene H. Draper
Dr. Kevin F. Ducey and Dr. Minh-Chau T. Dang
Dr. Hoyer and Mr. John M. Duckworth
Dr. Saju S. Eapen
Dr. Margie B. Eason
Drs. Paul and Margie Eason
Mona Gillis Edwards
Mrs. Karen Edwards
Mr. and Mrs. Frank T. Ellet
Mr. and Mrs. William D. Elliot
Empower Solutions, LLC and Recovery
Solutions Group, LLC
Mrs. Doris N. Ennis
Betty Bonsack Shaver Estate/Revocable Trust
Falling Spring Evangelical Presbyterian Church

Mrs. Bonnie Favero
Mrs. Kay Finch
Mr. and Mrs. James M. Fletchall
Flex Metrics
Mrs. Sandra T. Ford
Mr. W.C. Fowlkes
Franklin County Family YMCA
Mr. and Mrs. Robert R. Frantz
Mr. Robert Freis
Mrs. Linda M. French
The Hon. Bill and Tracy Frist
Mr. and Mrs. Jay E. Frith II
Mr. Jim Frith and Ms. Tracie Heavner
Mrs. Paige D. Frith
Ms. Marsha E. Frith
Mrs. Linda H. Gale
Mrs. Marty Gardner
Mrs. Judith Garland
Mr. and Mrs. J. Randolph Garrett III
Dr. and Mrs. James I. Gilbert, III
Dr. Gary E. Glontz
The Honorable and Mrs. Robert Goodlatte
Alex and Ann Gordon
Mrs. Jo Grayson
Drs. Will and Karli S. Griffeth
Ms. Catherine J. Griffin
Groves-Chaney Foundation
Mr. and Mrs. Johnny Guilliams
Mrs. Judy F. Hagadorn
Leon and Beverly Harris Fund
Mr. and Mrs. Joseph M. Haynes
Ms. Julie Haynes
Mrs. Thelma Haynesworth
Mr. and Mrs. Mason Haynesworth
Mr. and Mrs. Wilbur L. Hazlegrove
Ms. Tracie Heavner
Mrs. Vickie Helmstutler
Ms. Johanna M. Henretta
Henry County Circuit Court Clerk's Office



A WORD OF THANKS!

The Community Foundation recognizes the importance of professional advisors in the charitable gift process. Their work is a valued and valuable part of our long-term success, and we are deeply indebted for the regular and ongoing support and involvement of the professional advisor community!

Mr. and Mrs. William T. Hensley
 Mrs. Doris Higginbotham
 Ms. Lucy Hinson
 Mr. and Mrs. Courtney Hoge
 Mrs. Elizabeth M. Holsinger
 Mrs. Carol Hooker
 Brooke Howard
 Inve\$tCo Foundation
 Irving & Jett Groves Foundation
 Mrs. Linda W. Isley
 Mr. Willy Pierre Jacobee
 Jeff's Auto Parts LLC
 Mrs. Esther W. Johnson
 The Bucklin Family
 The Hylton Family
 The Johnson Family
 Ms. Cecelia R. Johnson
 Mr. and Mrs. Jeffrey Joyce
 Kaladaali Empower Inc.
 Mrs. Cheryl Kasey
 Ms. Deborah F. Kaufman
 Mr. Robert Kegley
 Ms. Mary L. Kegley
 Mr. Talfourd H. Kemper
 Mrs. Lori Kessman
 Mrs. Carole G. Kiser
 Ms. Tiffany C. Kitchen
 Kiwanis Club of Bassett Virginia Inc.
 Ben Koch
 Mrs. Lynn H. Korff
 Mrs. H. Elizabeth Kormos
 Kossen & Sarah Gregory Charitable Trust
 Valerie Kyle

Lambert/Raines
 Mrs. Amy P. Lampe
 Mr. and Mrs. William J. Lancaster
 Mr. and Mrs. Tim Lawson
 Suzanne Lay
 Mr. and Mrs. James B. Lee
 Mr. George W. Lester II
 Dr. and Mrs. George A. Levicki
 Mr. and Mrs. Henry Light
 Mrs. Katherine W. Long
 Mrs. Sarah Ludwig
 Dr. and Mrs. Eugene C. Madonia
 Mrs. Anne V. Madonia
 Dr. Raymond F. Mallinak
 Dr. and Mrs. Norman G. Marriott
 Colleen and Brett Marston
 Mrs. Martha Clay Martin
 Mr. and Mrs. Wayne Martin
 Martinsville Fire Department C Shift
 Martinsville Newco
 Martinsville-Henry County Family YMCA
 Ms. Deborah N. Mattern
 Peter Maybarduk
 McAden Charitable Trust
 Ms. Charlotte W. McClain
 Jeanne McClay
 Mrs. Betsy B. McClearn
 Dr. James T. McClung and Dr. Cathy Z. Ford
 Dr. and Mrs. John R. McCraw
 Mark and Shawn McCraw
 Mrs. Shawn P. McCraw
 Mrs. Tonie S. McMillan
 Member One Federal Credit Union

Mr. Rick Mercer
 Mr. and Mrs. Rick Mercer
 Mrs. Carole Mercer
 Mrs. Janet D. Mohr
 Eric and Monica Monday
 Dr. and Mrs. J. Peyton Moore
 Mrs. Linda Byrd Moore
 Bob and Yvonne Moore
 Mr. Wistar Morris
 Dr. James K. Muehleck
 Steven Mulvaney & Charlotte Parsons
 Mrs. Jennie Sue Murdock
 Muscatello Philanthropic Fund
 Mr. and Mrs. Martin E. Muscatello
 Meredith & Laurel Muscatello
 Mr. and Mrs. Steve Musselwhite
 Mr. and Mrs. William A. Nash
 Nettax LLC
 Mrs. Lynanne Newman
 Mrs. Carly C. Oliver
 Mr. William L. Pannill
 Ms. Charlotte L. Parsons
 Patrick County Circuit Court
 Mr. S. Kime Patsel
 Pendleton Construction Corporation Foundation
 Dr. John W. Pendleton
 Performance Title & Settlement Inc.
 Mrs. Nancy Philpott
 Ms. Mary Pickett
 Mrs. Betty Barnes Pigg
 Mr. John T. Pinkard Jr.
 Mr. and Mrs. John T. Pinkard
 Mrs. Ashby C. Pinkard

Celebrating Community and Generosity!



Highlights from the Community Foundation's annual celebrations at Hotel Roanoke in Roanoke, VA (above), and Hamlet Vineyards in Bassett, VA (below). These memorable events brought together supporters, partners, and friends to honor achievements and reflect on a year of impactful work.



Mrs. Christine B. Poirier
 Mrs. Linda C. Prillaman
 Mrs. Carolyn Rakes
 Mr. Matthew T. Ramsey
 Mrs. Ann Reaser
 Mrs. Pamela C. Reilly
 Ms. Ann Cecil Renick
 Dr. Randall R. Rhea
 Mr. Harry S. Rhodes
 Richard A. Giesen Trust
 Mrs. Lewis S. Riddle
 Roanoke City Public Schools
 Roanoke Women's Foundation
 Mr. and Mrs. J. David Robbins
 Mr. Martin L. Robison
 Newnie Rogers
 Mr. O. Randolph Rollins
 Mr. and Mrs. O. Randolph Rollins
 Mrs. Martha F. Rollins
 Ms. Betty L. Romero
 Ms. Judy Rowe
 Patricia Sanchez
 Mrs. Eliza H. Severt

Mrs. Elizabeth R. Sibbick
 Mr. and Mrs. Dewey N. Sink Jr.
 Dr. and Mrs. Edward P. Snyder
 Mrs. Kim Snyder
 Southern Area Agency on Aging Inc.
 Dr. and Mrs. Bertram Spetzler
 Ms. Melissa Stanley
 Mrs. Joyce Staples
 The Honorable and Mrs. William F. Stone Jr.
 Mrs. Catherine R. Stone
 Mr. and Mrs. Mark C. Stroud
 Mr. David Tate
 Mrs. Tracy E. Tate
 Mrs. Lorrie K. Teegen
 Thomas G. Karrasch Charitable Fund
 of Community Foundation for a
 Greater Richmond
 Mrs. Julie Hairfield Thomas
 Mr. and Mrs. Arthur L. Thompson
 Mrs. Jackie Thornton
 Dr. and Mrs. John T. Tielking
 Mr. and Mrs. Paul B. Toms Jr.
 The Honorable and Mrs. Philip Trompeter

Truist Foundations & Endowments
 Specialty Practice
 Mr. and Mrs. Richard M. Tunstall
 Ms. Mona Turner
 UBS Financial Services Inc
 United Way of Roanoke Valley Inc.
 Ms. Dianne Vann
 Victor A & Louise R Lester Educational Trust
 Mrs. Elizabeth M. Walker
 Mrs. Susan Warren
 Mrs. Stuart Webster
 Mr. and Mrs. L. Ray Welch Jr.
 Mrs. Sarah M. Whitmore
 Dr. and Mrs. Tracy D. Wilkins
 Mr. and Mrs. Tori B. Williams
 Mrs. Roslyn Wingett
 Mr. and Mrs. Barry Wirt
 Mr. and Mrs. David C. Witt
 Ms. Ellen L. Wood
 Mr. Joseph B. Wright

RODNEY M. HAYNES MEMORIAL FUND

Rodney Haynes legacy will forever resonate through a donor-advised fund established within the Community Foundation by his devoted wife, Vanessa and daughter and son-in-law, Tray and Jordan Alley. He unexpectedly passed away on November 11, 2023 while pursuing one of his passions, hiking at Chimney Rock State Park in Chimney Rock, North Carolina.

Rodney was a larger-than-life figure, boisterous, charismatic and a shrewd businessman. As the owner and Chief Executive Officer of NetTax, LLC, he was known for his sharp mind and unwavering dedication to his work. Yet, he thrived being in the great outdoors. He loved hiking and biking, and was an avid football fan, passionately cheering for the Washington Commanders, Virginia Tech, Clemson, and his daughter, Jordan's alma mater, the University of South Carolina Gamecocks. His love for Major League Baseball was equally fervent, with a particular fondness for the Atlanta Braves.



A Donor Advised Fund to Perpetuate the Memory of a Loved One

*Portions of this article were extracted from
Rodney's 2023 obituary.*

Family was everything to Rodney. He was a devoted family man, always providing for his loved ones and creating cherished memories together. Had a generous spirit, often engaging in random acts of kindness that went unnoticed by most. Rodney found joy in uplifting others.

His sudden absence has left a profound void in the hearts of those who knew and loved him. To honor his memory and make sense of their loss, his family established the Rodney M. Haynes Memorial Fund within Community Foundation Serving Western Virginia. This fund will ensure that Rodney's name and spirit live on, providing perpetual grants to support community initiatives and projects that reflect his values of generosity.

Through this lasting tribute, Rodney's impact on the community will be felt for generations to come, inspiring others to embrace kindness, adventure, and a passion for life — just as he did.

THESE GIFTS WERE MADE TO FUNDS THAT WERE MEANINGFUL TO EITHER THE ONE BEING MEMORIALIZED OR THE DONOR.

Throughout the year generous gifts were received for the following:

IN MEMORY OF

Jake Aldridge
Kelsey Cooper
Joseph Waskey Gilbert
Clarence M. Gillis
Clay Gravely
Rodney M. Haynes
J Howard
Taylor Dean Johnson
Rachel Lewis

Lang Mauck
Rev. William F. Murdock
Samuel & Tristan Pilson
Mr. and Mrs. Ray Welch, Sr.
Mr. and Mrs. Frank W. Rogers, Jr.
Chris Shoup
Helen Spencer
Dorothea & Loren Stevens

IN HONOR OF

Steve Arner
Mr. and Mrs. Abney S. Boxley III
CFSWVA staff
Melinda and David Cohan
Antony Eapen
Paul and Margie Eason
Paul and Margie Eason and
Kimberly and Chopper Snyder
April Haynes
Stan and Elise Lanford
Jackie McMillan



SERVICES FOR FINANCIAL, LEGAL AND INVESTMENT ADVISORS

Advisors play key roles in guiding their clients' philanthropy. They provide vital information about tax relief, building a family tradition of giving and identifying and structuring advantageous giving vehicles.

Community Foundation Serving Western Virginia supports advisors and their clients at every step in the charitable giving process. Throughout our community — financial, legal and investment advisors have discovered the capability and convenience of the Community Foundation's resources and have partnered with us to deliver charitable giving services for their clients.

Thank you for being a part of our long-term success, and we are deeply indebted for the regular support of attorneys, CPAs, trust officers, financial planners and the rest of the professional advisor community!

For more information, contact the Community Foundation's Roanoke office at 540.985.0204 or the Martinsville office at 276.656.6223 or visit www.cfwesternva.org.

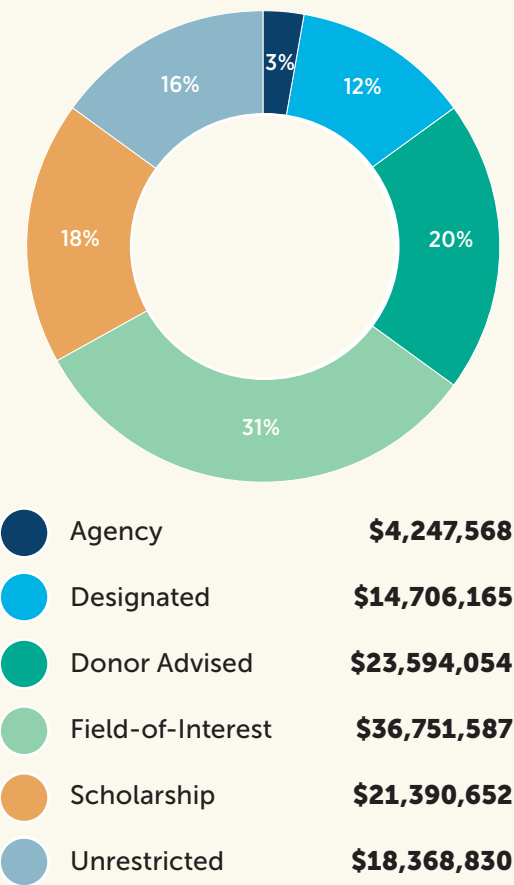


FINANCIAL SNAPSHOT

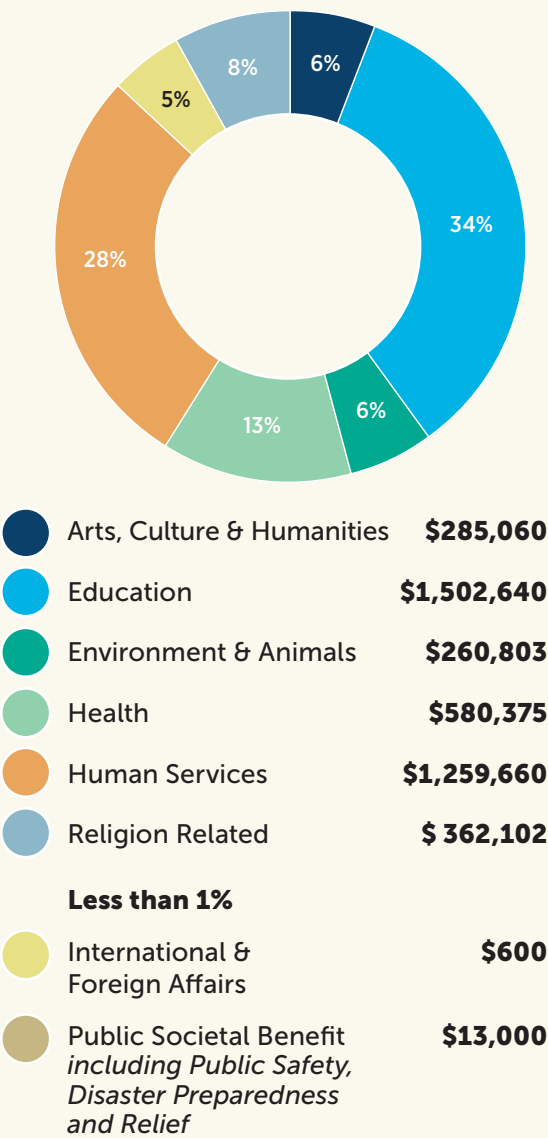
The brief information below is intended only to give the reader a quick overview of the Foundation. Upon completion, the current audited financial statements, that include all of the notes and disclosures required by generally accepted accounting principles, will be posted on the Foundation’s website.

TOTAL ASSETS:	\$120 MILLION
Approximate Deferred Estate Commitments:	\$170 million
Community Grants and Services Annually:	\$4.2 million
Cumulative Grants Since Inception:	\$74.2 million

ENDOWMENTS BY FUND TYPE



GRANT DISTRIBUTIONS BY CATEGORY





ROANOKE CORPORATE OFFICE

P.O. Box 1159 | Roanoke, VA 24006 | 540.985.0204

MARTINSVILLE REGIONAL OFFICE

P.O. Box 1124 | Martinsville, VA 24114 | 276.656.6223

cfwesternva.org